

Pro-face

by Schneider Electric

FANUC MT-LINK*i* Compatible

Multi-Converter (Multi-Data Box) for FANUC

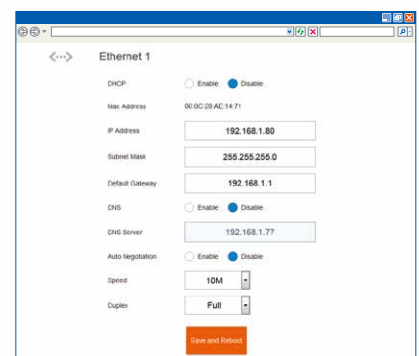
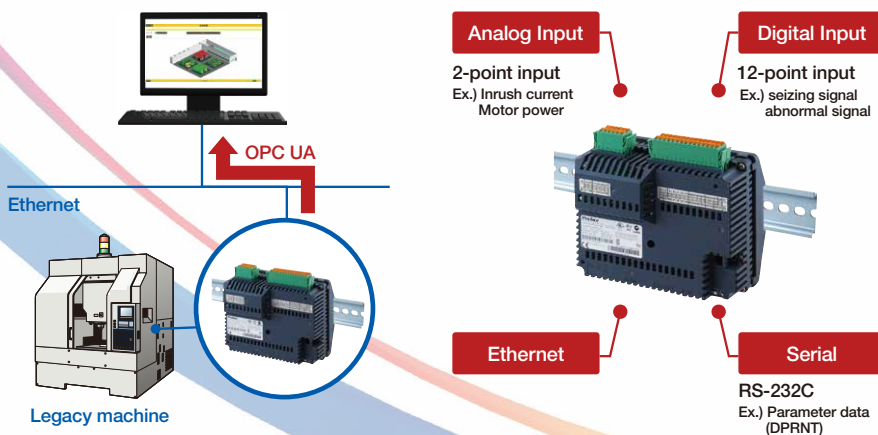
**Collect CNC data from
legacy machines to
MT-LINK*i* via
Multi-Data Box.**



Easily connect Legacy CNC machines to MT-LINK*i*.

Compatible with Serial (DPRNT) as well as I/O^{*1}. Acquire many types of data.

Configure main unit settings on a Web browser. No external software required.



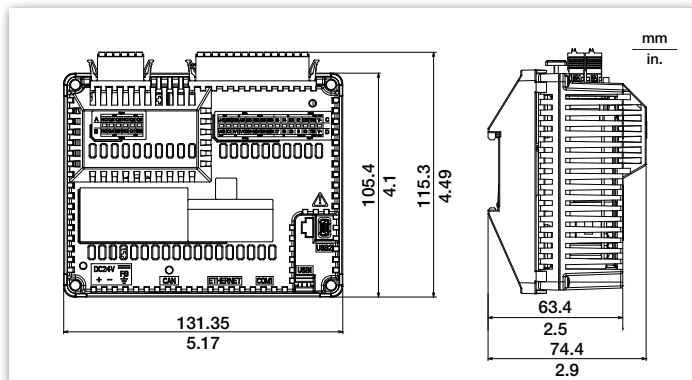
^{*1} Only input (DI x12 / AI x2) can be used (Read-only). Outputs such as analog output are not supported. Special IOs (high-speed counter, pulse input/output, temperature input) are not supported.

Multi-Converter (Multi-Data Box) for FANUC

Specifications

Model		PFXLM4B01DAKFF
Rated Input Voltage		24 Vdc
Acceptable Voltage Drop		10 ms or less at 20.4 Vdc
Power Consumption		10.4 W or less
In-Rush Current		30 A or less at 28.8 Vdc
Ambient operating temperature	Horizontal installation	0 to 50 °C (32 to 122 °F)
	Vertical installation	0 to 40 °C (32 to 104 °F)
Surrounding Air and Storage Humidity		5 to 85 % w / o condensation (non-condensing, wet bulb temperature 39 °C (102.2 °F) or less)
Degree of pollution	IEC 60664	2
Vibration resistance	Mounted on a DIN rail	3.5 mm (0.138 in.) fixed amplitude from 5 to 8.4 Hz 9.8 m / s2 (1 gn) fixed acceleration from 8.4 to 150 Hz
Serial (COM)		RS-232C / 485 Connector type: RJ45
USB		USB 2.0 (Type A) x1 USB 2.0 (mini-B) x1
Ethernet		10 BASE-T / 100 BASE-TX x1
Control	Digital Input	12 Points Standard Input sink and source
	Analog Input	2 ch analog inputs (13-bit)
External dimensions		W131.35 x H115.3 x D74.4 mm (W5.17 x H4.49 x D2.9 in.)
Weight		544 g (19.19 oz)

Dimensions



Compatible CNC

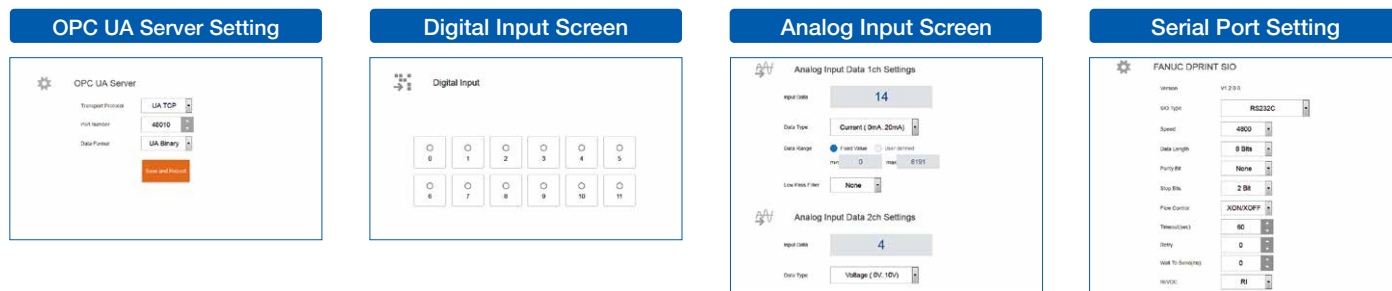
	I/O signal	RS-232 signal (DPRNT)*1
FANUC Series 0	✓	-
FANUC Series 15	✓	✓
FANUC Series 16 / 18 / 20 / 21	✓	✓
FANUC Power Mate -D / F / H	✓	✓
FANUC Series 16i / 18i / 21i	✓	✓
FANUC Power Mate i	✓	✓
FANUC Series 15i	✓	✓
FANUC Series 0i	✓	✓
FANUC Series 30i / 31i / 32i / 35i	✓	✓
FANUC Power Motion i	✓	✓
PLC and CNC other than the above	✓	-

*1 Might not be compatible depending on configuration of CNC.

Option

Product Name	Model	Description
FANUC CNC connection cable (5 m)	PFXZLMCBJR22	A serial communication cable for connecting this product to FANUC CNC.

Setting Screens (on a Web browser)



WARNING

HAZARD OF OPERATOR INJURY, OR UNINTENDED EQUIPMENT DAMAGE

Before operating any of these products, be sure to read all related manuals thoroughly.
Failure to follow these instructions can result in death, serious injury or equipment damage.

- For printing purposes, the colors in this catalog may differ from those of the actual unit.
- Actual user screens may differ from the screens shown here.
- Electrical equipment should be installed, operated, serviced, and maintained only by qualified personnel. No responsibility is assumed by Digital for any consequences arising out of the use of this material.
- All product names used in this catalog are the registered trademarks or trademarks of their respective companies.
- All information contained in this catalog is subject to change without notice.



SCIGATE AUTOMATION (S) PTE LTD

No.1 Bukit Batok Street 22 #01-01 Singapore 659592
Tel: (65) 6561 0488 Fax: (65) 6562 0588
Email: sales@scigate.com.sg Web: www.scigate.com.sg
Business Hours: Monday - Friday 8.30am - 6.15pm



Visit our website for more information.
www.proface.com

Global Headquarters
Digital Electronics Corporation
[JAPAN] Tel: +81-(0)6-6208-3133

North / South American Headquarters
Pro-face America, Inc.
[U.S.A.] Tel: +1-734-477-0600

European Headquarters
Pro-face Europe B.V.
[THE NETHERLANDS] Tel: +31 (0)23 55 44 099