

FUTEK MODEL LTH500

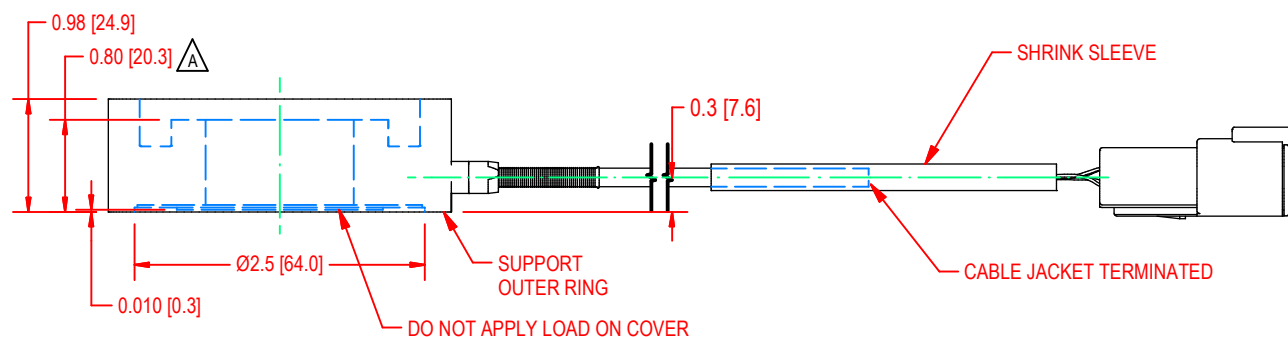
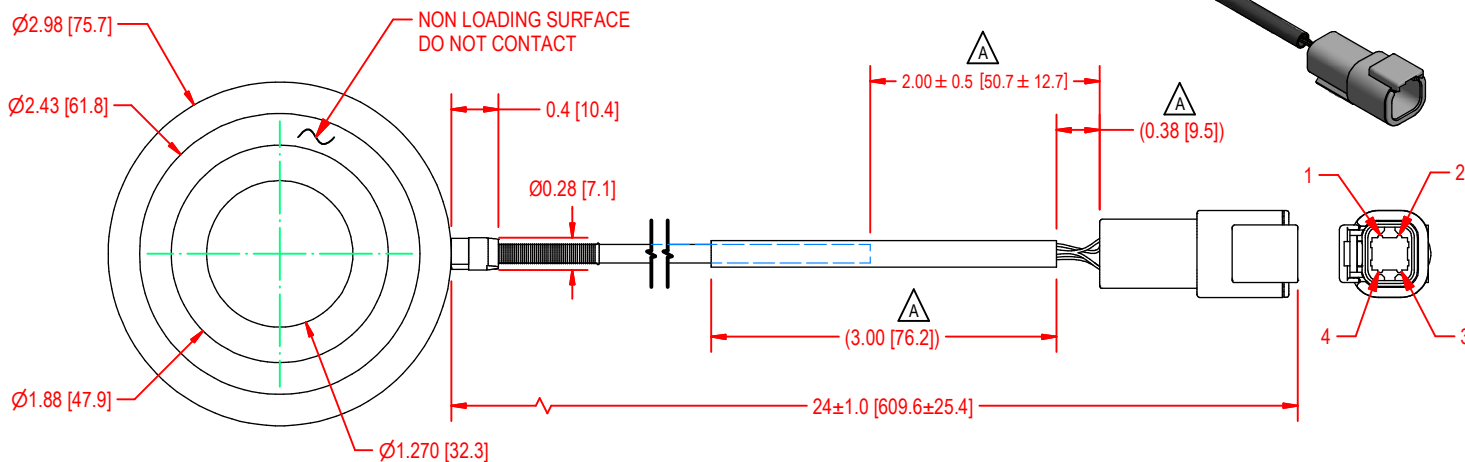
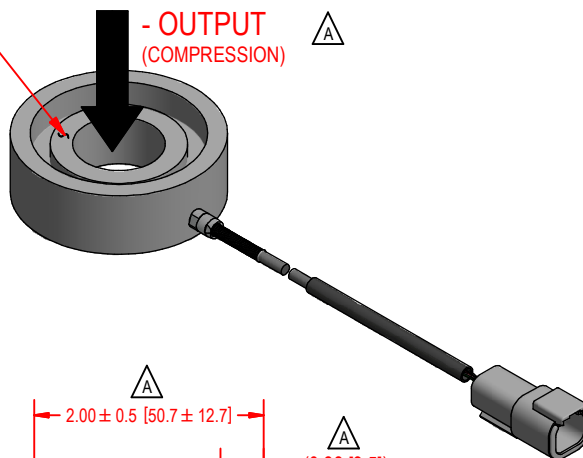
ITEM NUMBER: QSH01880

Donut Load Cell with Recessed ID Hub

INCH [mm] | R.O. = Rated Output

CONNECTOR CODE			
+ Excitation	- Excitation	+ Signal	- Signal
PIN 1 (RED)	PIN 2 (BLK)	PIN 3 (WHT)	PIN 4 (GRN)

LOADING SURFACE - OUTPUT (COMPRESSION) Δ



SPECIFICATIONS:

RATED OUTPUT	2 mV/V nom.
CAPACITY	2000 lb. [8880N]
SAFE OVERLOAD	150 % of R.O.
EXCITATION (VDC OR VAC)	18 MAX
BRIDGE RESISTANCE	700 Ω nom.
NONLINEARITY	$\pm 0.5\%$ of R.O.
HYSTERESIS	$\pm 0.5\%$ of R.O.
NONREPEATABILITY	$\pm 0.5\%$ of R.O.
TEMP. SHIFT ZERO	$\pm 0.005\%$ of R.O./ $^{\circ}$ F (± 0.009 of R.O./ $^{\circ}$ C)
TEMP. SHIFT SPAN	$\pm 0.005\%$ of LOAD/ $^{\circ}$ F (± 0.009 of LOAD/ $^{\circ}$ C)
COMPENSATED TEMP.	60 to 160 $^{\circ}$ F (16 to 71 $^{\circ}$ C)
OPERATING TEMP	-40 to 200 $^{\circ}$ F (-40 to 93 $^{\circ}$ C)
WEIGHT (approx)	1.7 lb [771 g]
MATERIAL	17-4 PH S.S.
CABLE: #24 AWG TEFLON JACKETED CABLE MATED TO DTM04-4P, 4X 0460-202-2031 GOLD OVER NICKEL PINS	



SCIGATE AUTOMATION (S) PTE LTD

No.1 Bukit Batok Street 22 #01-01 Singapore 659592
 Tel: (65) 6561 0488 Fax: (65) 6562 0588
 Email: sales@scigate.com.sg Web: www.scigate.com.sg

Business Hours: Monday - Friday 8.30am - 6.15pm

CUSTOMER APPROVAL- COMPANY:

CUSTOMER APPROVAL- NAME / DATE:

REVISIONS: (Refer to dwg # revision sheet)

A	1/12/17
---	---------

OUTLINE DRAWING

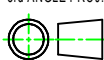
STANDARD NOTES: (Unless Otherwise Specified)

ALL DIMENSIONS ARE IN INCHES
 DRAWING INTERPRETATION DIMS. PER ASME-Y14.5M
 REMOVE BURRS AND BREAK SHARP EDGES .005 - .015
 THREADS PER HANDBOOK H-28
 DIMENSIONS ARE SHOWN AFTER PLATING

ANGLE:
 $\pm 1/2^{\circ}$

CHAMFER:
 $\pm 5^{\circ}$

TOLERANCE:
 .X $\pm 0.1^{\circ}$
 .XX $\pm 0.01^{\circ}$
 .XXX $\pm 0.005^{\circ}$



This drawing is submitted solely for the information and exclusive use of the original addressee. It is not to be divulged in whole or in part, by any firm or individual without written permission from:

FUTEK
 ADVANCED SENSOR TECHNOLOGY, INC.
 10 THOMAS, IRVINE, CA 92618 USA
 Phone: (949) 465-0900
 Fax: (949) 465-0905

MODEL: LTH500	DWG No.: FO1437-A
DRAWN BY: T. Huynh	CREATED DATE: 12/6/2016
APPROVED BY: R. Walker	APPROVED DATE: 12/13/2016
CHECKED BY:	CAGE: 1X8M6 SHEET: 1 OF 1