

# FUTEK MODEL QLA368

## Custom Beam Load Cell

ITEM NUMBER: SEE CHART

SEE CHART FOR ITEM # ENGRAVING

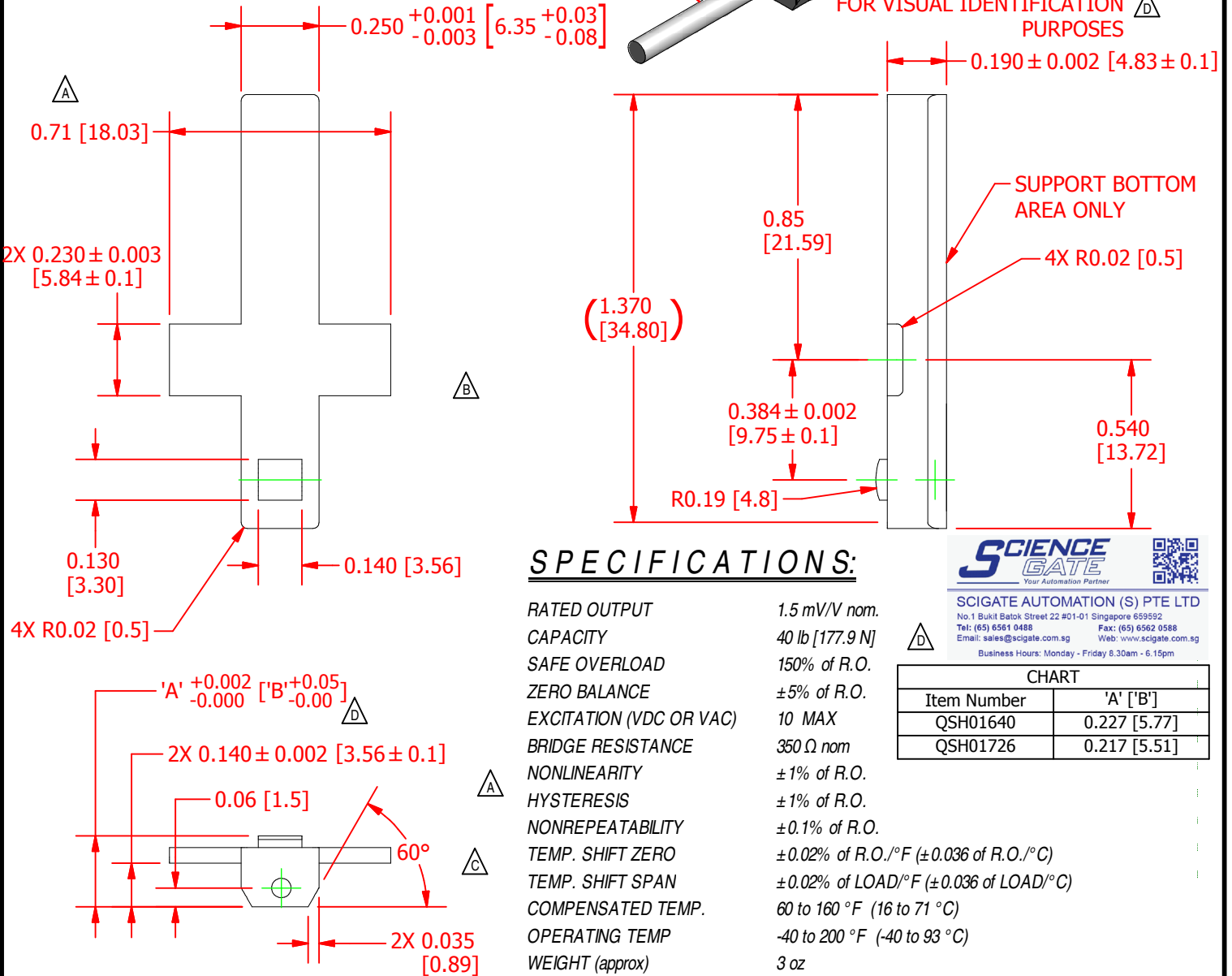
INCH [mm]		R.O.= Rated Output	
WIRING CODE (WC1)			
+ Excitation	- Excitation	+ Signal	- Signal
RED	BLACK	GREEN	WHITE
CHART			
Shield			
FLOATING			

+ OUTPUT  
(COMPRESSION)

LOADING SURFACE

Ø0.047 [1.19] NOM. CABLE  
5' LONG

SMALL SPOT ON QSH01726  
FOR VISUAL IDENTIFICATION  
PURPOSES



### SPECIFICATIONS:

RATED OUTPUT	1.5 mV/V nom.
CAPACITY	40 lb [177.9 N]
SAFE OVERLOAD	150% of R.O.
ZERO BALANCE	±5% of R.O.
EXCITATION (VDC OR VAC)	10 MAX
BRIDGE RESISTANCE	350 Ω nom
NONLINEARITY	±1% of R.O.
HYSTERESIS	±1% of R.O.
NONREPEATABILITY	±0.1% of R.O.
TEMP. SHIFT ZERO	±0.02% of R.O./°F (±0.036 of R.O./°C)
TEMP. SHIFT SPAN	±0.02% of LOAD/°F (±0.036 of LOAD/°C)
COMPENSATED TEMP.	60 to 160 °F (16 to 71 °C)
OPERATING TEMP	-40 to 200 °F (-40 to 93 °C)
WEIGHT (approx)	3 oz
MATERIAL	17-4ph S.S. Flexure
CABLE: #34 Awg, 4 Conductor Teflon, S.S. Braided Shielded Cable, 5 ft [1.5m] Long	



SCIGATE AUTOMATION (S) PTE LTD  
No.1 Bukit Batok Street 22 #01-01 Singapore 659592  
Tel: (65) 6561 0488 Fax: (65) 6562 0588  
Email: sales@scigate.com.sg Web: www.scigate.com.sg  
Business Hours: Monday - Friday 8.30am - 6.15pm

CHART	
Item Number	'A' ['B']
QSH01640	0.227 [5.77]
QSH01726	0.217 [5.51]

CUSTOMER APPROVAL- COMPANY:

CUSTOMER APPROVAL- NAME / DATE:

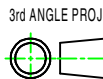
REVISIONS: (Refer to dwg # revision sheet)

A	12/19/12
B	12/21/12
C	1/11/13
D	1/14/2015

## OUTLINE DRAWING

STANDARD NOTES: (Unless Otherwise Specified)

ALL DIMENSIONS ARE IN INCHES  
DRAWING INTERPRETATION DIMS. PER ASME-Y14.5M  
REMOVE BURRS AND BREAK SHARP EDGES .005 - .015  
THREADS PER HANDBOOK H-28  
DIMENSIONS ARE SHOWN AFTER PLATING



ANGLE:  
± 1/2°

CHAMFER:  
± 5°

TOLERANCE:  
.X ± 0.1"  
.XX ± 0.01"  
.XXX ± 0.005"

This drawing is submitted solely for the information and exclusive use of the original addressee. It is not to be divulged in whole or in part, by any firm or individual without written permission from:

**FUTEK**  
ADVANCED SENSOR TECHNOLOGY, INC.  
10 THOMAS, IRVINE, CA 92618 USA  
Phone: (949) 465-0900  
Fax: (949) 465-0905

MODEL: <b>QLA368</b>	DWG No.: <b>FO1336-D</b>
DRAWN BY: E. Pano	CREATED DATE: 12/17/2012
APPROVED BY: R. Walker	APPROVED DATE: 12/11/2012
CHECKED BY:	CAGE: 1X8M6 SHEET: 1 OF 1