

Telemetry Server - Exemys

Quick Guide: **How to connect a GRD**

Introduction

This quick guide is oriented towards GRD equipment users that contracted access to the Exemys **Telemetry Server**. This guide should be supplemented with the help of the GRD configuration software (GRD Configuration).

Necessary Elements

- GRD Device (New Line)
- SIM Card with GPRS Data Service
- Power Supply (12 to 24 Vdc).
- USB Configuration Cable
- GRDconfig software ([Link](#))
- Telemetry Server Configuration Form (* Note 1)

(* Note 1) Upon contracting the service, you should receive a Configuration Form with the Telemetry Server information and how to configure each GRD that you will connect.

GRD Installation

To install the GRD, please read the "**GRD User's Manual**" that is installed with the GRDconfig software. Refer to the section: "GRD Installation".

SIM Card

So that the GRD can attach itself to the GPRS network, you must insert a SIM card with GPRS data service. Contact your wireless carrier to obtain the appropriate SIM card.

Then insert the SIM card in the GRD as indicated in the User's Manual. The SIM card should be placed with GRD de-energized.

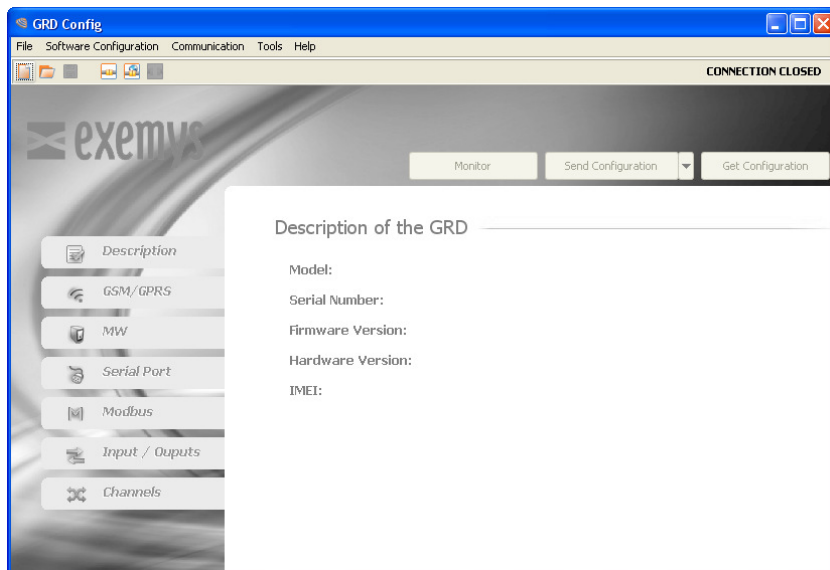
Connecting the GRD to the Server

GRD Configuration

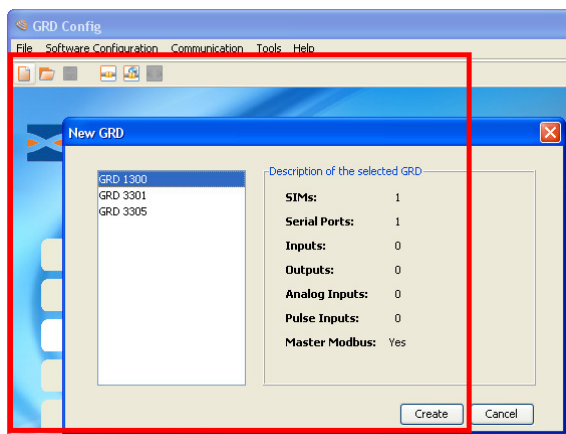
To configure the GRD, you should install the **GRDconfig software** and the **USB Driver**. Please read the user's manual that is installed with the GRD to set up the driver (Section "GRD configurator").

After installing the driver, open the GRDconfig software.

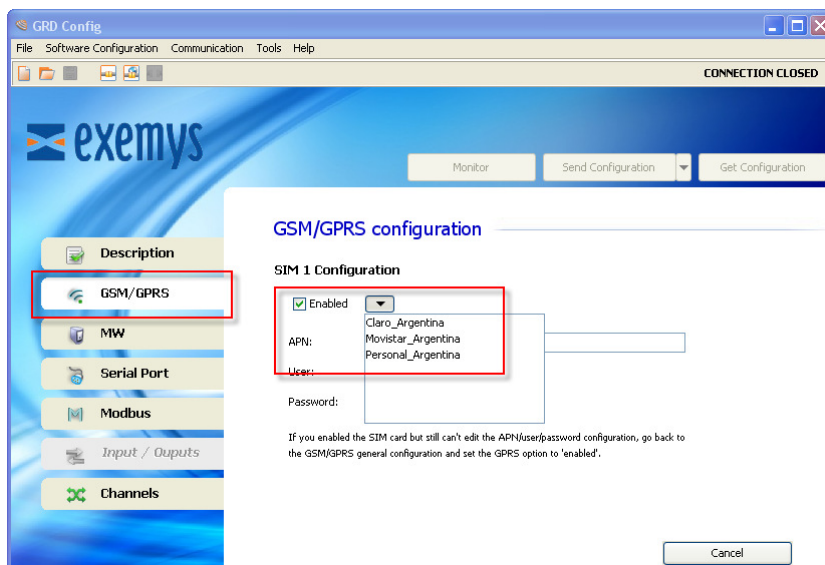
The following window should be displayed.



From here, select the option File / New and select the corresponding GRD model. Then press "Create".

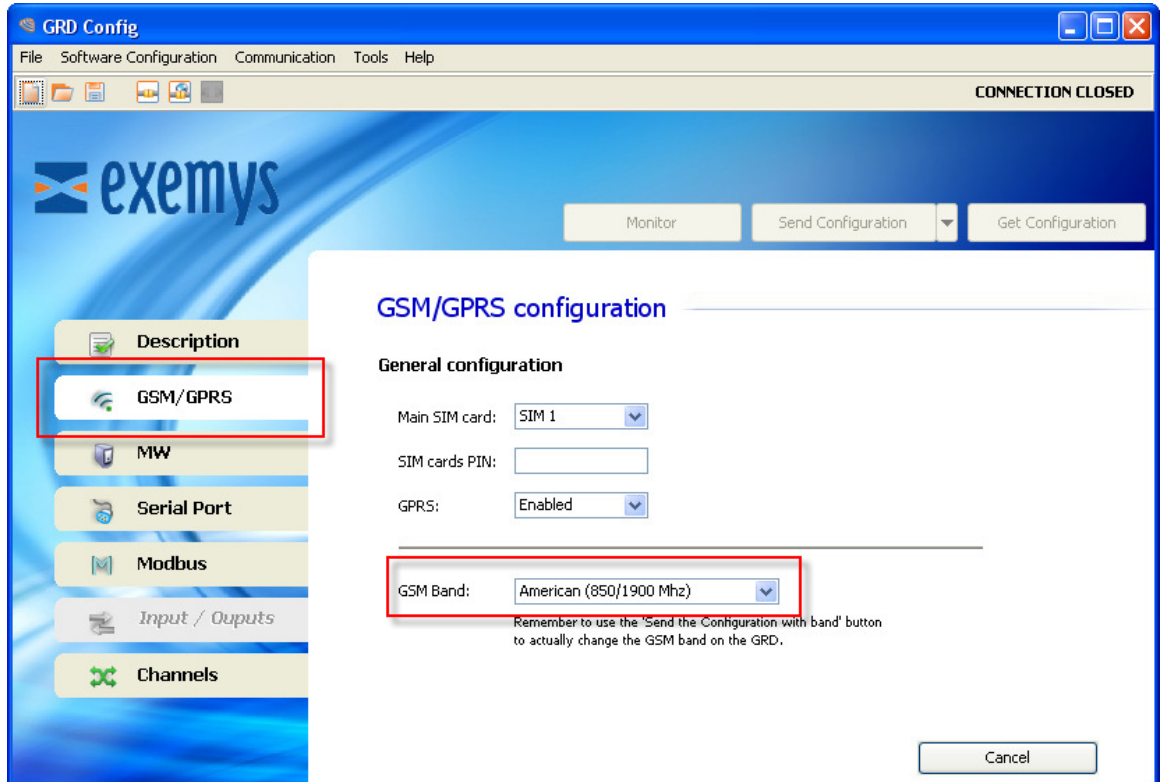


Configuring the Mobile Operator



Type the APN/User/Password depending on the mobile phone operator.

If your GSM Band is European, it can be changed from GSM/GPRS, General Configuration. Also the PIN of the SIM can be configured if necessary.



Configuration of the Connection with the Server

Upon contracting the service, you should receive a Configuration Form with the Telemetry Server information and how to configure each GRD that you will connect.

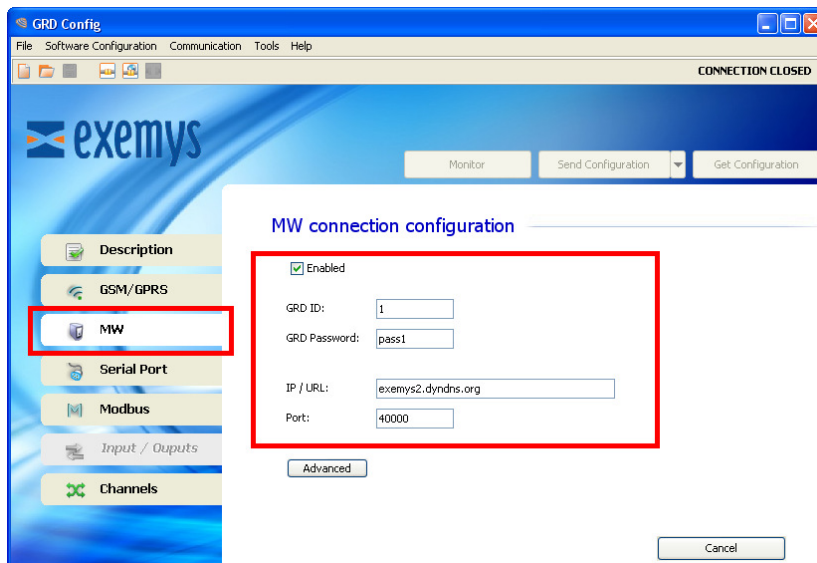
Configure the data of "MW Connection Configuration" as indicated in the following figure.

The "URL/IP" and "Port" information of the Telemetry Server will be delivered in the Configuration Form.

GPRS Telemetry server	
URL / IP	exemys2.dyndns.org
Port	40000

#	GRD ID	GRD password
1	177	xa d87
2	178	xa d87
3	179	xa d87

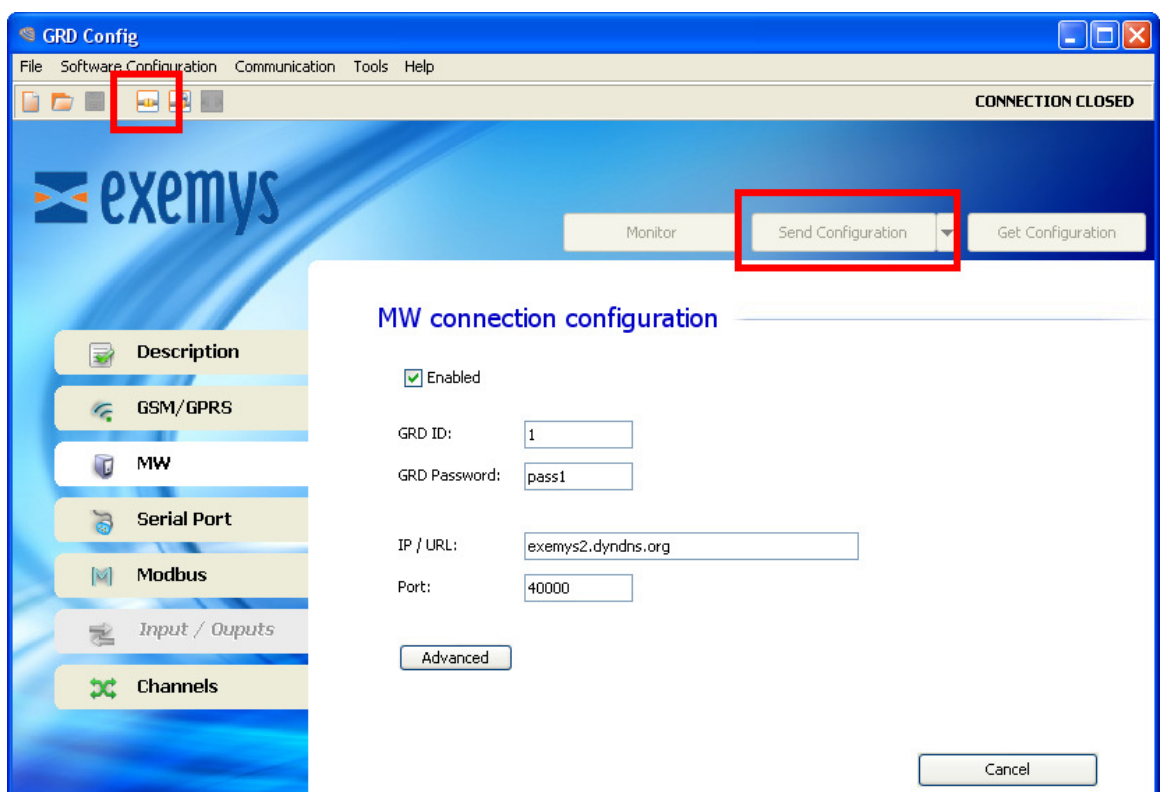
Each GRD will have its own "GRD ID" and "GRD Password".



Sending the Configuration to the GRD

Press the local connection button or go to the Communication / Open Local Connection Menu.

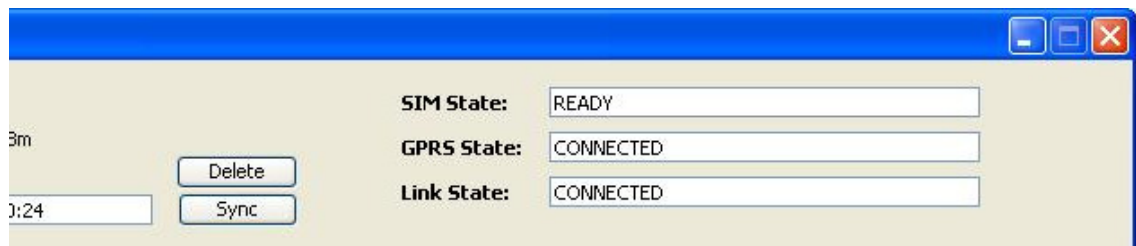
Once connected, press the "Send Configuration" button. If the GSM band is changed, press instead the "Send Configuration with Band" button.



Monitoring the Connection

After sending the configuration to the GRD, press the "Monitor" button to verify the connection with the MW.

Above to the right, you will see the status of the SIM, of the GPRS and of the Connection with the MW (Link status).



To the left you will see the level of signal.

If the connection is successful, you will see the status Ready and Connected as you can see in the previous figure. Read the GRD Configuration Help to obtain more details regarding the possible statuses.

If an established connection cannot be achieved, verify:

- 1) If the SIM card inserted has an appropriate data plan.
- 2) If the GPRS information (APN/USER/PASSWORD) is correct.
- 3) If the ID and password of the GRD and the URL and server port are configured correspondingly.

Once the GRD is connected, you should see the led of "LINK" in front of the GRD constantly on.

Verification Text Messages (SMS)

Once the GRD is installed, remember that the status of the connection with the server can be verified through the SMS message "STATE"

If you have any questions, please see the GRD Manual or write us at support@exemys.com