

UniOP eTOP504

The eTOP504 compact 4,3" widescreen display completes the eTOP series 500 with a no-compromise low-cost product. The built-in dual 100Mb Ethernet interfaces with switch function enhance its communication capability and make it the ideal choice for small systems.



- 4.3" TFT color display
- 480x272 pixel resolution, 64K colors
- Resistive touchscreen
- 2 Ethernet ports with switch function
- USB Host port
- SD Card slot
- Multistandard Serial Port
- Connection to bus systems using optional plug-in modules

Highlights

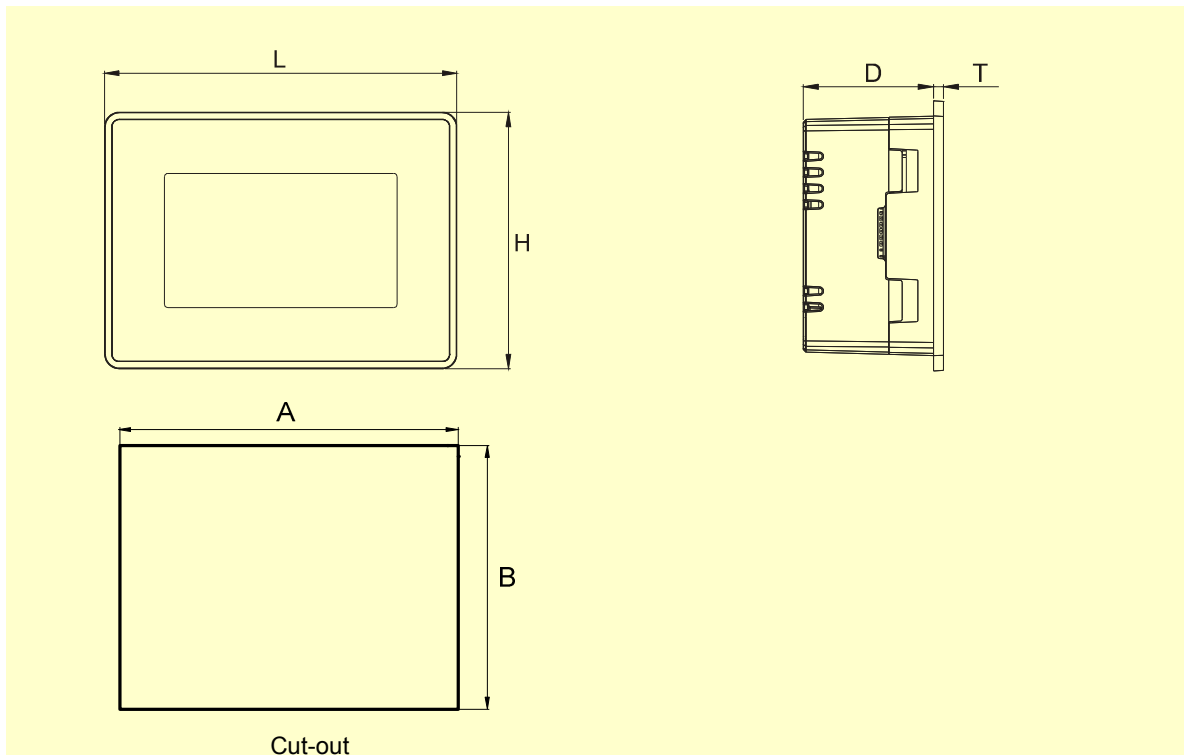
The eTOP Series 500 HMI panels have been designed to run the JMobile software.

- JMobile runtime included. Full compatibility with JMobile Studio.
- Full vector graphic support. Native support of SVG graphic objects. Transparency and alpha blending.
- Full object dynamics: control visibility and transparency, move, resize, rotate any object on screen. Change properties of basic and complex objects.
- TrueType fonts
- Multilanguage applications. Easily create and manage your applications in multiple languages to meet global requirements. Far East languages are supported. Tools available in JMobile Studio support easy third-party translations and help reducing development and maintenance costs of the application
- Data display in numerical, text, bargraph, analog gauges and graphic image formats.
- Rich set of state-of-the-art HMI features: data acquisition, alarm handling, scheduler and timed actions (daily and weekly schedulers, exception dates), recipes, users and passwords, e-mail and RSS feeds, rotating menus
- Includes support for a wide range of communication drivers for Factory and Building Automation systems.
- Multiple drivers communication capability.
- Remote monitoring and control. Client-Server functionality. Mobile clients supported.
- Remote maintenance and support with VNC-based functionality.
- Off-line and On-line simulation with JMobile Studio.
- Powerful scripting language for automating HMI applications. Script debugging improves efficiency in application development.
- Rich gallery of symbols and objects
- Project templates
- Optional plug-in modules for fieldbus systems, I/O and controllers.
- Wide dimming to 0% supported

Technical Data

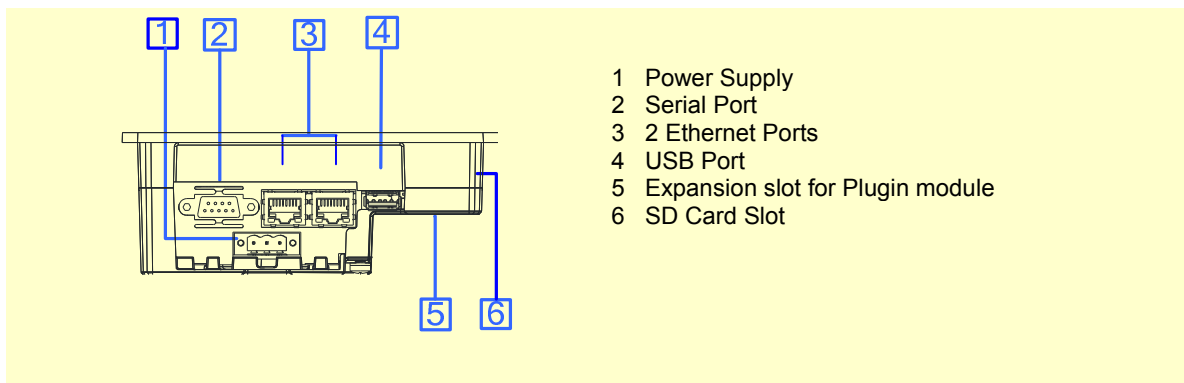
Display Type TFT Resolution 480x272 pixel Active display area 4.3" diagonal (95.4x53.9 mm) Colors 64K Backlight LED Brightness 150 cd/m ² typ. Dimming Yes		Screen saver Yes Buzzer Yes, audible feedback for touchscreen
System Resources Operating System Microsoft Windows CE 6.0 User memory 128 MB Flash RAM 256MB DDR		Ratings Power supply voltage 24 Vdc (10 to 32 Vdc) Current consumption 0.55A at 24Vdc(max.) Fuse Automatic Weight Approx 1.0 Kg Battery Rechargeable Lithium battery, not user-replaceable
Operator Interface Touchscreen Analog resistive LED indicators 1 (dual color)		Environmental Conditions Operating temperature 0 to 50 °C (vertical installation) Storage temperature -20 to +70 °C Operating and storage humidity 5 – 85 % relative humidity, non-condensing Protection class IP66 (front) IP20 (rear)
Interface Ethernet 2 10/100 Mbit with integrated Switch USB 1 Host interfaces v.2.0 Serial RS-232, RS-485, RS-422, software configurable Expansion Slot 1 Optional Plugin Memory Card SD Card Slot		Dimensions Faceplate LxH 147x107 mm (5.78x4.21") Cutout AxB 136x96 mm (5.35x3.78") Depth D+T 56 + 4mm (2.40+0.16")
Functionality Vector graphics Yes, includes SVG support Object dynamics Yes. Visibility, opacity, position, size, rotation for most object types. TrueType fonts Yes Multiple driver communication Yes Data acquisition and trend presentation Yes. Flash memory storage limited only by available memory Multilanguage Yes, with runtime language switching. Recipes Yes. Flash memory storage limited only by available memory Alarms Yes Historical event list Yes Users and passwords Yes Hardware Real Time Clock Yes, with battery back-up		Approvals CE Emission EN 61000-6-4 Immunity EN 61000-6-2 for installation in industrial environments DNV DNV Type Approval Certificate UL UL508 Listed Haz. Loc. Class I, Division 2, Groups A,B,C and D. C-Tick C-Tick mark

Dimensions



Cut-out

Connections



Ordering Information

Model-Type	Part Number	Description
eTOP504-White	ETOP504U1P1	4.3" TFT color touchscreen panel with Ethernet interface, White front panel. JMobile run-time.
eTOP504-Silver	ETOP504U2P1	4.3" TFT color touchscreen panel with Ethernet interface. Silver front panel. JMobile run-time.
eTOP504-Black	ETOP504U3P1	4.3" TFT color touchscreen panel with Ethernet interface Black front panel. JMobile run-time.
PROTFOIL-04-GL	R-PROT11	Disposable protection foil for 3.5"/3.8"/4.3" eTOP touch panels (10 pieces)
PROTFOIL-04-UV	R-PROT17	Disposable protection foil for 3.5"/3.8"/4.3" eTOP touch panels (10 pieces). UV resistant

ptn0314**Ver. 1.5****Copyright © 2011-2014 Exor International S.p.A. – Verona, Italy**

Subject to change without notice

The information contained in this document is provided for informational purposes only. While efforts were made to verify the accuracy of the information contained in this documentation, it is provided "as is" without warranty of any kind.

www.uniop.com

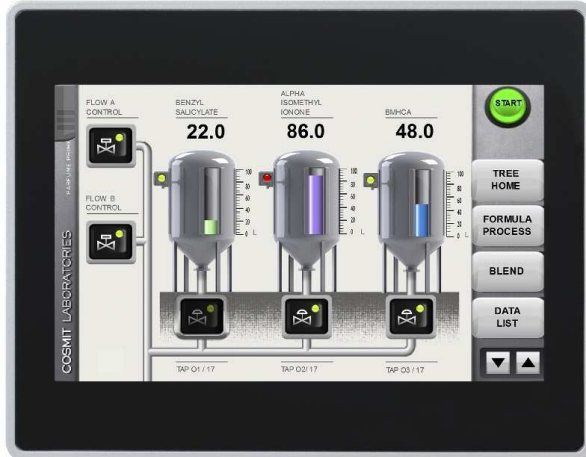
ptn0314-5.doc - 17.02.2014

UniOP eTOP504

UniOP eTOP507

The UniOP eTOP Series 500 HMI products combine state-of-the-art features and top performance with an outstanding design. They are the ideal choice for all demanding HMI applications including factory and building automation.

The eTOP507 features a bright 7" TFT widescreen (16:9) display with a fully dimmable LED backlight. The JMobile software offers full vector graphic capabilities and plenty of connectivity options.



- 7" TFT color display, LED backlight
- 800x480 pixel (WVGA) resolution, 64K colors
- Resistive touchscreen
- 2 Ethernet ports with switch function
- 2 USB Host ports
- SD Card Slot
- Connection to fieldbus systems and I/O using optional plug-in modules
- Slim design. Mounting depth less than 50mm

Highlights

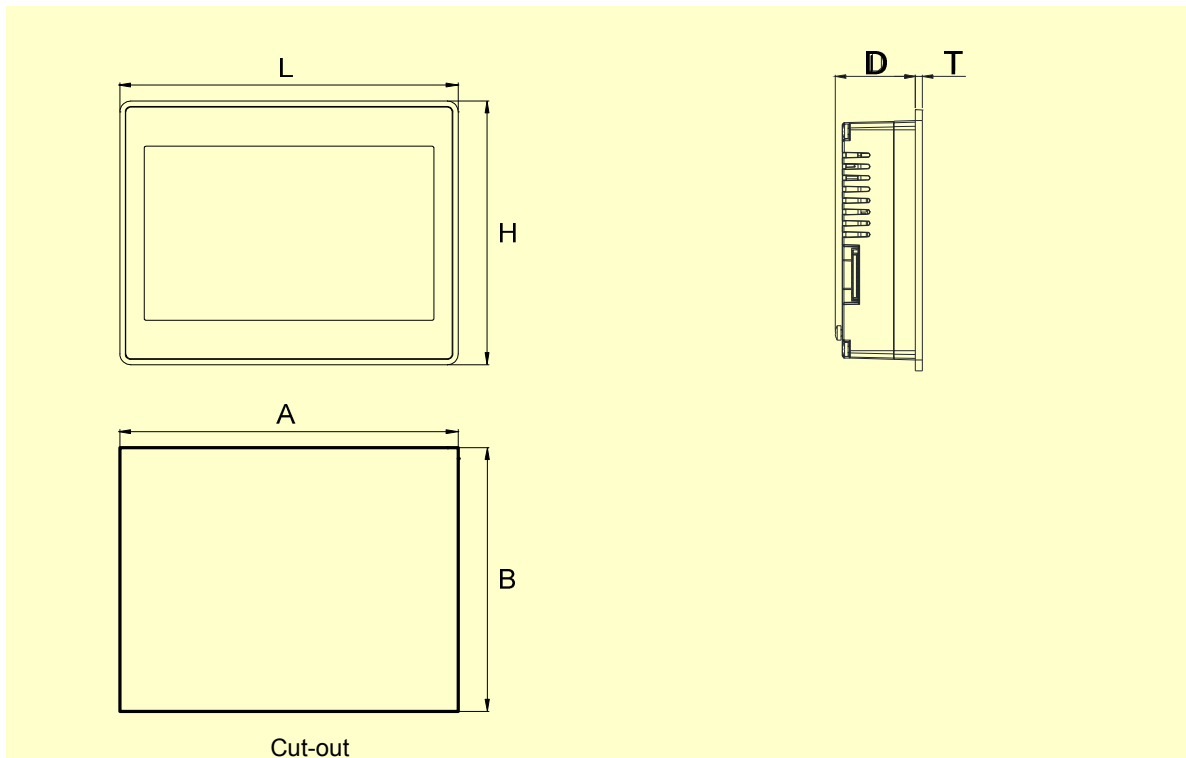
The eTOP Series 500 HMI panels have been designed to run the JMobile software.

- JMobile runtime included. Full compatibility with JMobile Studio.
- Full vector graphic support. Native support of SVG graphic objects. Transparency and alpha blending.
- Full object dynamics: control visibility and transparency, move, resize, rotate any object on screen. Change properties of basic and complex objects.
- TrueType fonts
- Multilanguage applications. Easily create and manage your applications in multiple languages to meet global requirements. Far East languages are supported. Tools available in JMobile Studio support easy third-party translations and help reducing development and maintenance costs of the application
- Data display in numerical, text, bargraph, analog gauges and graphic image formats.
- Rich set of state-of-the-art HMI features: data acquisition, alarm handling, scheduler and timed actions (daily and weekly schedulers, exception dates), recipes, users and passwords, e-mail and RSS feeds, rotating menus
- Includes support for a wide range of communication drivers for Factory and Building Automation systems.
- Multiple drivers communication capability.
- Remote monitoring and control. Client-Server functionality. Mobile clients supported.
- Remote maintenance and support with VNC-based functionality.
- Off-line simulation of the HMI application with JMobile Studio.
- Powerful scripting language for automating HMI applications. Script debugging improves efficiency in application development.
- Rich gallery of symbols and objects
- Project templates
- Optional plug-in modules for fieldbus systems, I/O and controllers.
- Display backlight dimmable to 0%

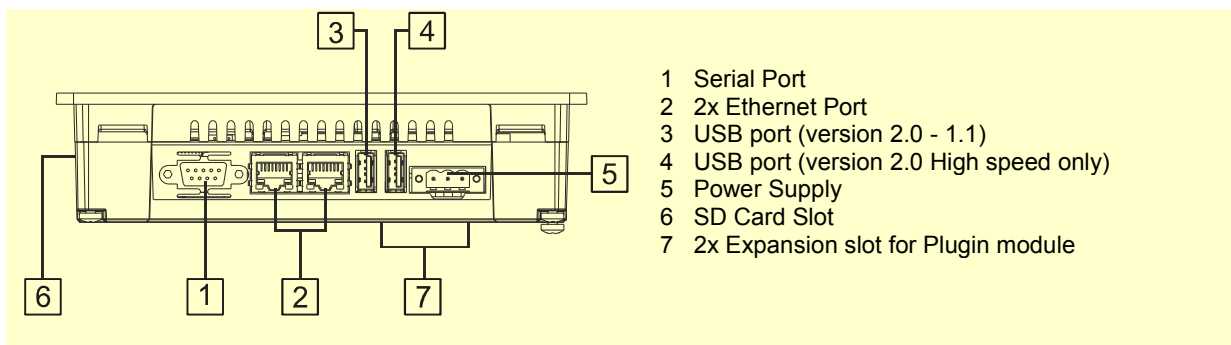
Technical Data

Display		Buzzer	Yes, audible feedback for touchscreen
Type	TFT	Ratings	
Resolution	800x480, WVGA	Power supply voltage	24 Vdc (10 to 32 Vdc)
Active display area	7" diagonal	Current consumption	0.65A at 24Vdc(max.)
Colors	64K	Fuse	Automatic
Backlight	LED	Weight	Approx 1.0 Kg
Brightness	300 Cd/m ² typ.	Battery	Rechargeable Lithium battery, not user-replaceable
Dimming	Yes	Environmental Conditions	
System Resources		Operating temperature	0 to 50 °C (vertical installation)
Operating System	Microsoft Windows CE 6.0	Storage temperature	-20 to +70 °C
User memory	128 MB Flash	Operating and storage humidity	5 – 85 % relative humidity, non-condensing
RAM	256MB DDR	Protection class	IP66 (front) IP20 (rear)
Operator Interface		Dimensions	
Touchscreen	Analog resistive	Faceplate LxH	187x147 mm (7.36x5.79")
LED indicators	1 (dual color)	Cutout AxB	176x136 mm (6.93x5.35")
Interface		Depth D+T	47+4 mm (1.85+0.16")
Ethernet	2 10/100 Mbit with integrated Switch	Approvals	
USB	2 Host Interface (1 version 2.0, 1 version 2.0 and 1.1)	CE	Emission EN 61000-6-4 Immunity EN 61000-6-2 for installation in industrial environments
Serial	RS-232, RS-485, RS-422, software configurable	DNV	DNV Type Approval Certificate
Expansion Slot	2 Optional plug-in	UL	UL508 Listed Haz. Loc. Class I, Division 2, Groups A,B,C and D.
Memory Card	SD Card Slot	C-Tick	C-Tick mark
Functionality		GL	Germanischer Lloyd Type Approval Certificate
Vector graphics	Yes, includes SVG support		
Object dynamics	Yes. Visibility, opacity, position, size, rotation for most object types.		
TrueType fonts	Yes		
Multiple driver communication	Yes		
Data acquisition and trend presentation	Yes. Flash memory storage limited only by available memory		
Multilanguage	Yes, with runtime language switching.		
Recipes	Yes. Flash memory storage limited only by available memory		
Alarms	Yes		
Historical event list	Yes		
Users and passwords	Yes		
Hardware Real Time Clock	Yes, with battery back-up		
Screen saver	Yes		

Dimensions



Connections



Ordering Information

Model	Part Number	Description
eTOP507-White	+ETOP507U1P1 +ETOP507U1P3	7" widescreen TFT color touchscreen with Ethernet and USB interfaces. White front panel. JMobile run-time.
eTOP507-Silver	+ETOP507U2P1 +ETOP507U2P3	7" widescreen TFT color touchscreen with Ethernet and USB interfaces. Silver front panel. JMobile run-time.
eTOP507-Black	+ETOP507U3P1 +ETOP507U3P3	7" widescreen TFT color touchscreen with Ethernet and USB interfaces. Black front panel. JMobile run-time.
PROTFOIL-07-GL	R-PROT12	Disposable protection foil for 5.7" and 7" eTOP touch panels (10 pieces).
PROTFOIL-07-UV	R-PROT18	Disposable protection foil for 5.7" and 7" eTOP touch panels (10 pieces). UV resistant.

ptn0347

Ver. 1.9

Copyright © 2011-2014 Exor International S.p.A. – Verona, Italy

Subject to change without notice

The information contained in this document is provided for informational purposes only. While efforts were made to verify the accuracy of the information contained in this documentation, it is provided "as is" without warranty of any kind.

www.uniop.com

UniOP eTOP510

The UniOP eTOP Series 500 HMI products combine state-of-the-art features and top performance with an outstanding design. They are the ideal choice for all demanding HMI applications including factory and building automation.

The eTOP510 features a bright 10"4 TFT display with a fully dimmable LED backlight.

The JMobile software offers full vector graphic capabilities and plenty of connectivity options.



- 10"4 SVGA TFT color display, LED backlight
- 800x600 pixel (SVGA) resolution, 64K colors
- Resistive touchscreen
- 2 Ethernet ports with switch function
- 2 USB Host ports
- SD Card Slot
- Connection to fieldbus systems and I/O using optional plug-in modules
- Slim design. Mounting depth less than 50mm

Highlights

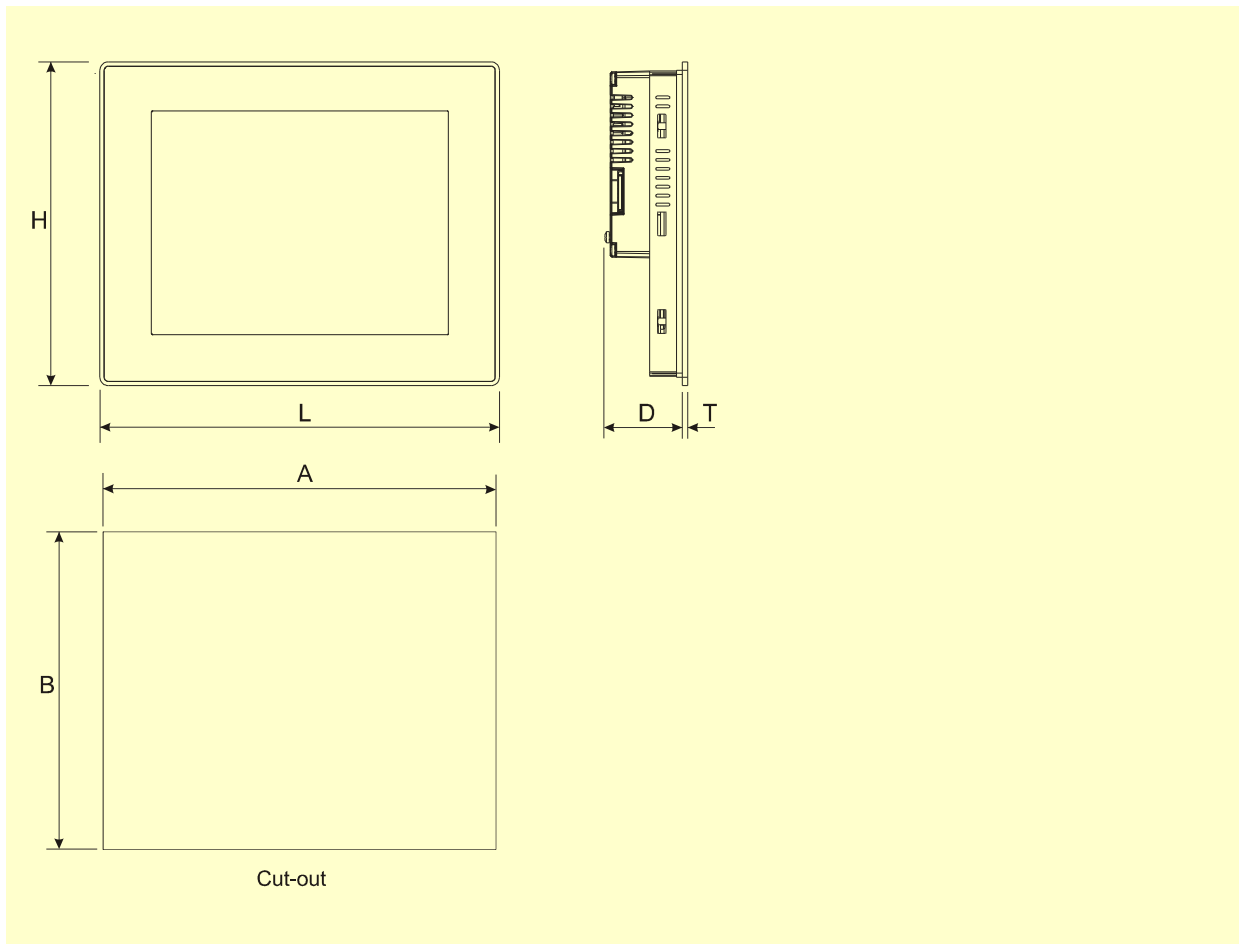
The eTOP Series 500 HMI panels have been designed to run the JMobile software.

- JMobile runtime included. Full compatibility with JMobile Studio.
- Full vector graphic support. Native support of SVG graphic objects. Transparency and alpha blending.
- Full object dynamics: control visibility and transparency, move, resize, rotate any object on screen. Change properties of basic and complex objects.
- TrueType fonts
- Multilanguage applications. Easily create and manage your applications in multiple languages to meet global requirements. Far East languages are supported. Tools available in JMobile Studio support easy third-party translations and help reducing development and maintenance costs of the application
- Data display in numerical, text, bargraph, analog gauges and graphic image formats.
- Rich set of state-of-the-art HMI features: data acquisition, alarm handling, scheduler and timed actions (daily and weekly schedulers, exception dates), recipes, users and passwords, e-mail and RSS feeds, rotating menus
- Includes support for a wide range of communication drivers for Factory and Building Automation systems.
- Multiple drivers communication capability.
- Remote monitoring and control. Client-Server functionality. Mobile clients supported.
- Remote maintenance and support with VNC-based functionality.
- Off-line simulation of the HMI application with JMobile Studio.
- Powerful scripting language for automating HMI applications. Script debugging improves efficiency in application development.
- Rich gallery of symbols and objects
- Project templates
- Optional plug-in modules for fieldbus systems, I/O and controllers.
- Display backlight dimmable 0%

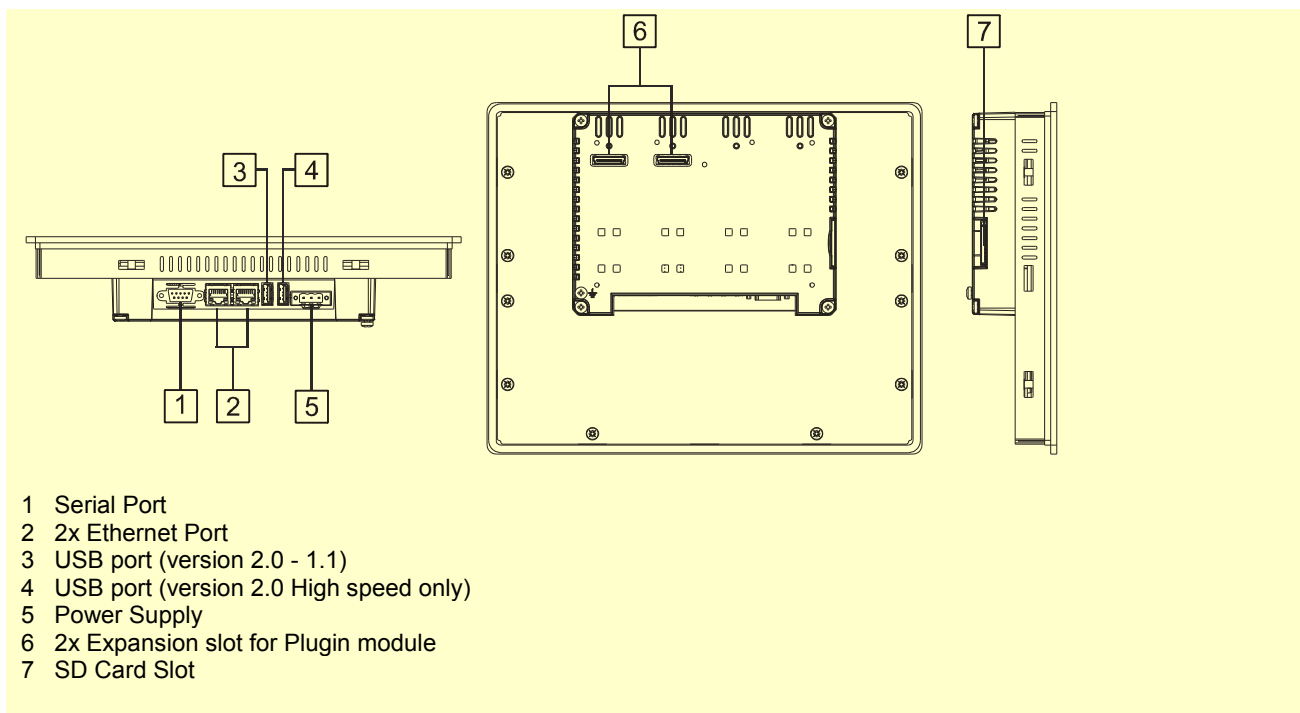
Technical Data

Display		Screen saver	Yes
Type	TFT	Buzzer	Yes, audible feedback for touchscreen
Resolution	800x600, SVGA		
Active display area	10"4 diagonal	Ratings	
Colors	64K	Power supply voltage	24 Vdc (10 to 32 Vdc)
Backlight	LED	Current consumption	0.95A at 24Vdc(max.)
Brightness	300 Cd/m ² typ.	Fuse	Automatic
Dimming	Yes	Weight	Approx 2.1 Kg
		Battery	Rechargeable Lithium battery, not user-replaceable
System Resources		Environmental Conditions	
Operating System	Microsoft Windows CE 6.0	Operating temperature	0 to 50 °C (vertical installation)
User memory	256 MB Flash	Storage temperature	-20 to +70 °C
RAM	256MB DDR	Operating and storage humidity	5 – 85 % relative humidity, non-condensing
Operator Interface		Protection class	IP66 (front) IP20 (rear)
Touchscreen	Analog resistive	Dimensions	
LED indicators	1 (dual color)	Faceplate LxH	287x232 mm (11.3x9.13")
Interface		Cutout AxB	276x221 mm (10.86x8.70")
Ethernet	2 10/100 Mbit with integrated Switch	Depth D+T	56+4 mm (2.20+0.16")
USB	2 Host Interface (1 version 2.0, 1 version 2.0 and 1.1)	Approvals	
Serial	RS-232, RS-485, RS-422, software configurable	CE	Emission EN 61000-6-4 Immunity EN 61000-6-2 for installation in industrial environments
Expansion Slot	2 Optional plug-in	DNV	DNV Type Approval Certificate
Memory Card	SD Card Slot	UL	UL508 Listed Haz. Loc. Class I, Division 2, Groups A,B,C and D.
Functionality		C-Tick	C-Tick mark
Vector graphics	Yes, includes SVG support		
Object dynamics	Yes. Visibility, opacity, position, size, rotation for most object types.		
TrueType fonts	Yes		
Multiple driver communication	Yes, max 2 drivers		
Data acquisition and trend presentation	Yes. Flash memory storage limited only by available memory		
Multilanguage	Yes, with runtime language switching.		
Recipes	Yes. Flash memory storage limited only by available memory		
Alarms	Yes		
Historical event list	Yes		
Users and passwords	Yes		
Hardware Real Time Clock	Yes, with battery back-up		

Dimensions



Connections



Ordering Information

Model	Part Number	Description
eTOP510-White	+ETOP510U1P1	10"4 TFT color touchscreen with Ethernet and USB interfaces. White front panel. JMobile run-time.
eTOP510-Silver	+ETOP510U2P1	10"4 TFT color touchscreen with Ethernet and USB interfaces. Silver front panel. JMobile run-time.
eTOP510-Black	+ETOP510U3P1	10"4 TFT color touchscreen with Ethernet and USB interfaces. Black front panel. JMobile run-time.
PROTFOIL-10-GL	R-PROT14	Disposable protection foil for 10"4 eTOP touch panels (10 pieces).
PROTFOIL-10-UV	R-PROT20	Disposable protection foil for 10"4 eTOP touch panels (10 pieces). UV resistant.

ptn0353

Ver. 1.6

Copyright © 2011-2014 Exor International S.p.A. – Verona, Italy

Subject to change without notice

The information contained in this document is provided for informational purposes only. While efforts were made to verify the accuracy of the information contained in this documentation, it is provided "as is" without warranty of any kind.

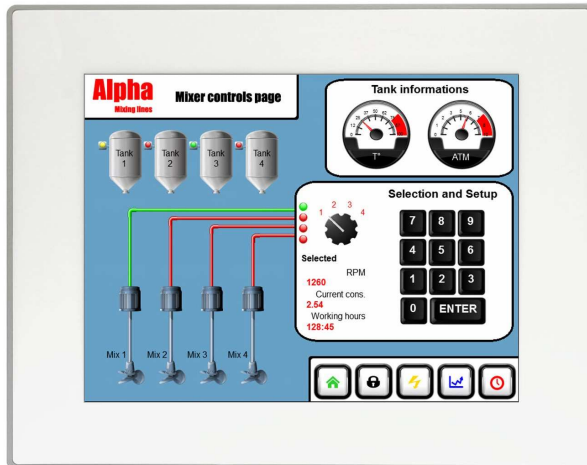
www.uniop.com

UniOP eTOP512

The UniOP eTOP Series 500 HMI products combine state-of-the-art features and top performance with an outstanding design. They are the ideal choice for all demanding HMI applications including factory and building automation.

The eTOP512 features a bright 12"1 TFT display with a fully dimmable LED backlight.

The JMobile software offers full vector graphic capabilities and plenty of connectivity options.



- 12"1 SVGA TFT color display, LED backlight
- 800x600 pixel (SVGA) resolution, 64K colors
- Resistive touchscreen
- 2 Ethernet ports with switch function
- 2 USB Host ports
- SD Card Slot
- Connection to fieldbus systems and I/O using optional plug-in modules
- Slim design. Mounting depth less than 50mm

Highlights

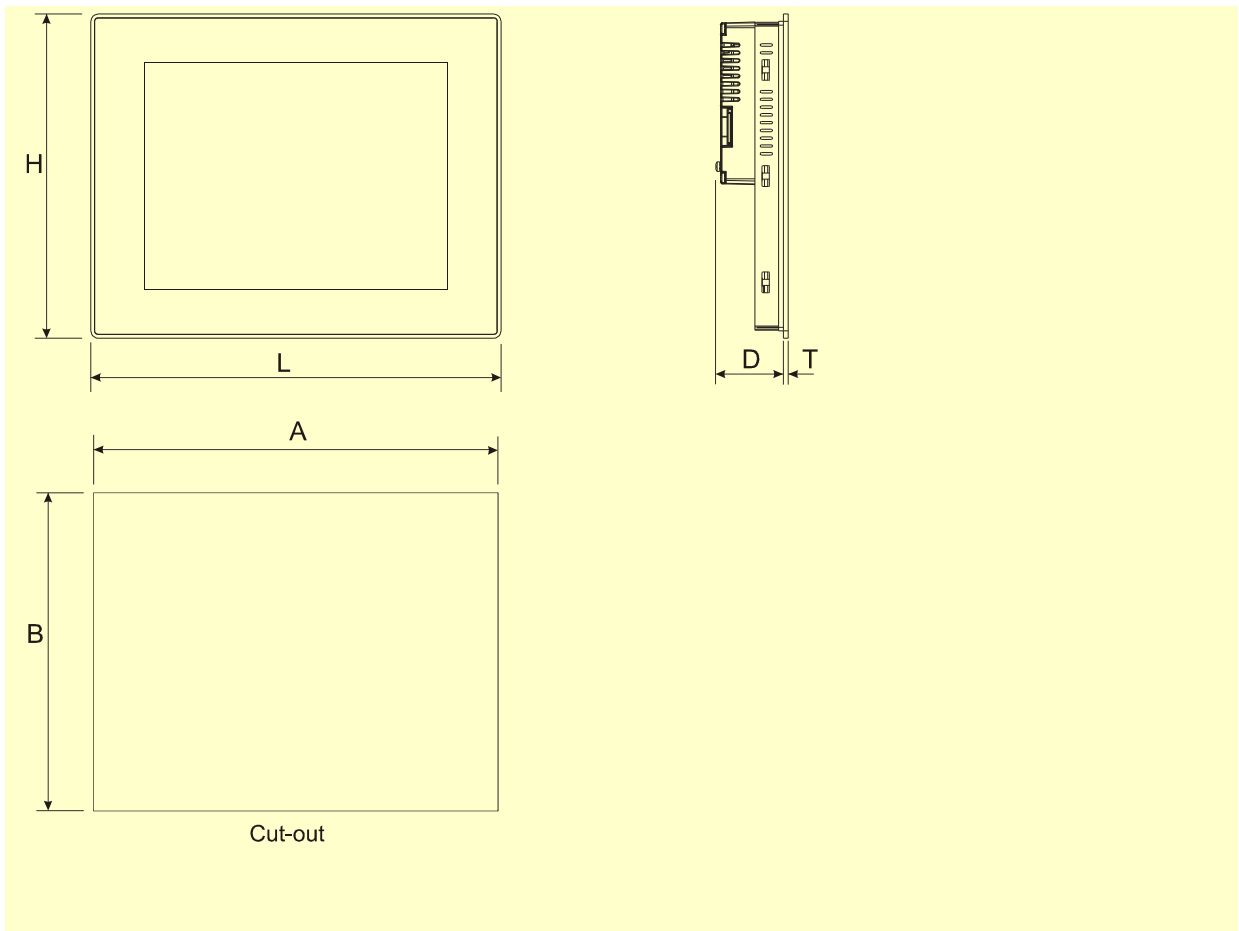
The eTOP Series 500 HMI panels have been designed to run the JMobile software.

- JMobile runtime included. Full compatibility with JMobile Studio.
- Full vector graphic support. Native support of SVG graphic objects. Transparency and alpha blending.
- Full object dynamics: control visibility and transparency, move, resize, rotate any object on screen. Change properties of basic and complex objects.
- TrueType fonts
- Multilanguage applications. Easily create and manage your applications in multiple languages to meet global requirements. Far East languages are supported. Tools available in JMobile Studio support easy third-party translations and help reducing development and maintenance costs of the application
- Data display in numerical, text, bargraph, analog gauges and graphic image formats.
- Rich set of state-of-the-art HMI features: data acquisition, alarm handling, scheduler and timed actions (daily and weekly schedulers, exception dates), recipes, users and passwords, e-mail and RSS feeds, rotating menus
- Includes support for a wide range of communication drivers for Factory and Building Automation systems.
- Multiple drivers communication capability.
- Remote monitoring and control. Client-Server functionality. Mobile clients supported.
- Remote maintenance and support with VNC-based functionality.
- Off-line simulation of the HMI application with JMobile Studio.
- Powerful scripting language for automating HMI applications. Script debugging improves efficiency in application development.
- Rich gallery of symbols and objects
- Project templates
- Optional plug-in modules for fieldbus systems, I/O and controllers.
- Display backlight dimmable to 0%

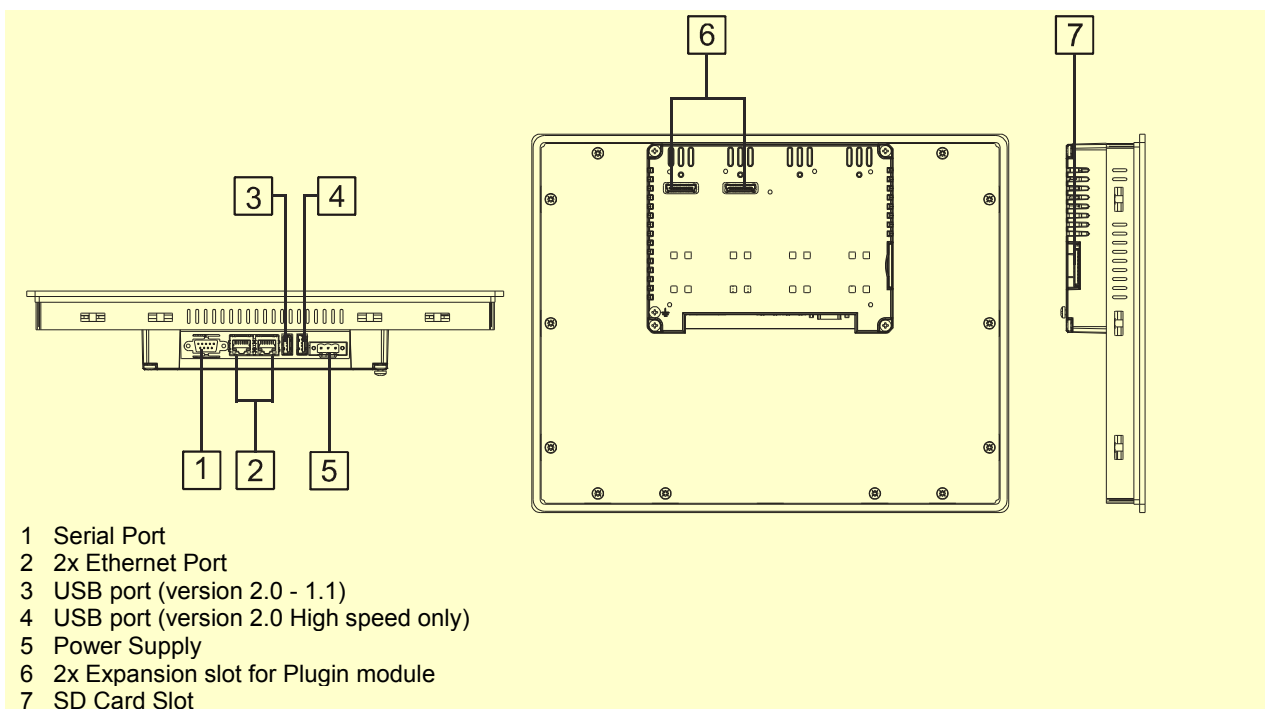
Technical Data

Display		Screen saver	Yes
Type	TFT	Buzzer	Yes, audible feedback for touchscreen
Resolution	800x600, SVGA		
Active display area	12"1 diagonal	Ratings	
Colors	64K	Power supply voltage	24 Vdc (10 to 32 Vdc)
Backlight	LED	Current consumption	1.05A at 24Vdc(max.)
Brightness	300 Cd/m ² typ.	Fuse	Automatic
Dimming	Yes	Weight	Approx 2.8 Kg
		Battery	Rechargeable Lithium battery, not user-replaceable
System Resources		Environmental Conditions	
Operating System	Microsoft Windows CE 6.0	Operating temperature	0 to 50 °C (vertical installation)
User memory	256 MB Flash	Storage temperature	-20 to +70 °C
RAM	256MB DDR	Operating and storage humidity	5 – 85 % relative humidity, non-condensing
		Protection class	IP66 (front) IP20 (rear)
Operator Interface		Dimensions	
Touchscreen	Analog resistive	Faceplate LxH	336x267 mm (13.22x10.51")
LED indicators	1 (dual color)	Cutout AxB	326x256 mm (12.83x10.07")
		Depth D+T	56+4 mm (2.20+0.16")
Interface		Approvals	
Ethernet	2 10/100 Mbit with integrated Switch	CE	Emission EN 61000-6-4 Immunity EN 61000-6-2 for installation in industrial environments
USB	2 Host Interface (1 version 2.0, 1 version 2.0 and 1.1)	DNV	DNV Type Approval Certificate
Serial	RS-232, RS-485, RS-422, software configurable	UL	UL508 Listed Haz. Loc. Class I, Division 2, Groups A,B,C and D.
Expansion Slot	2 Optional plug-in	C-Tick	C-Tick mark
Memory Card	SD Card Slot		
Functionality			
Vector graphics	Yes, includes SVG support		
Object dynamics	Yes. Visibility, opacity, position, size, rotation for most object types.		
TrueType fonts	Yes		
Multiple driver communication	Yes, max 2 drivers		
Data acquisition and trend presentation	Yes. Flash memory storage limited only by available memory		
Multilanguage	Yes, with runtime language switching.		
Recipes	Yes. Flash memory storage limited only by available memory		
Alarms	Yes		
Historical event list	Yes		
Users and passwords	Yes		
Hardware Real Time Clock	Yes, with battery back-up		

Dimensions



Connections



Ordering Information

Model	Part Number	Description
eTOP512-White	+ETOP512U1P1	12"1 TFT color touchscreen with Ethernet and USB interfaces. White front panel. JMobile run-time.
eTOP512-Silver	+ETOP512U2P1	12"1 TFT color touchscreen with Ethernet and USB interfaces. Silver front panel. JMobile run-time.
eTOP512-Black	+ETOP512U3P1	12"1 TFT color touchscreen with Ethernet and USB interfaces. Black front panel. JMobile run-time.
PROTFOIL-15-GL	R-PROT13	Disposable protection foil for 12"1 eTOP touch panels (10 pieces).
PROTFOIL-13-UV	R-PROT21	Disposable protection foil for 12"1 eTOP touch panels (10 pieces). UV resistant.

ptn0354

Ver. 1.6

Copyright © 2011-2014 Exor International S.p.A. – Verona, Italy

Subject to change without notice

The information contained in this document is provided for informational purposes only. While efforts were made to verify the accuracy of the information contained in this documentation, it is provided "as is" without warranty of any kind.

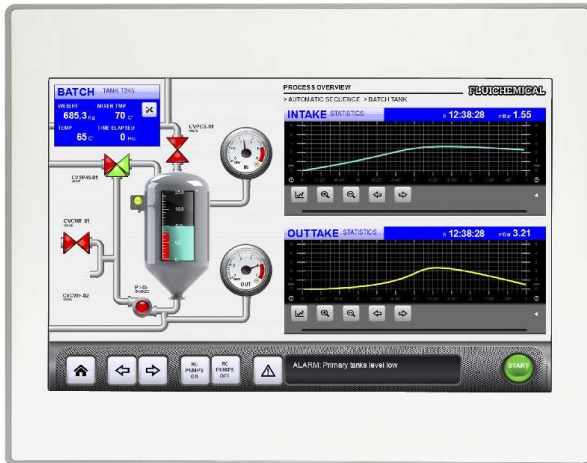
www.uniop.com

UniOP eTOP513

The UniOP eTOP Series 500 HMI products combine state-of-the-art features and top performance with an outstanding design. They are the ideal choice for all demanding HMI applications including factory and building automation.

The eTOP513 features a bright 13"3 widescreen (16:9) TFT display with a fully dimmable LED backlight.

The JMobile software offers full vector graphic capabilities and plenty of connectivity options.



- 13"3 WXGA TFT color display, LED backlight
- 1280x800 pixel resolution, 64K colors
- Resistive touchscreen
- 2 Ethernet ports with switch function
- 2 USB Host ports
- SD Card Slot
- Connection to fieldbus systems and I/O using optional plug-in modules
- Slim design. Mounting depth less than 50mm

Highlights

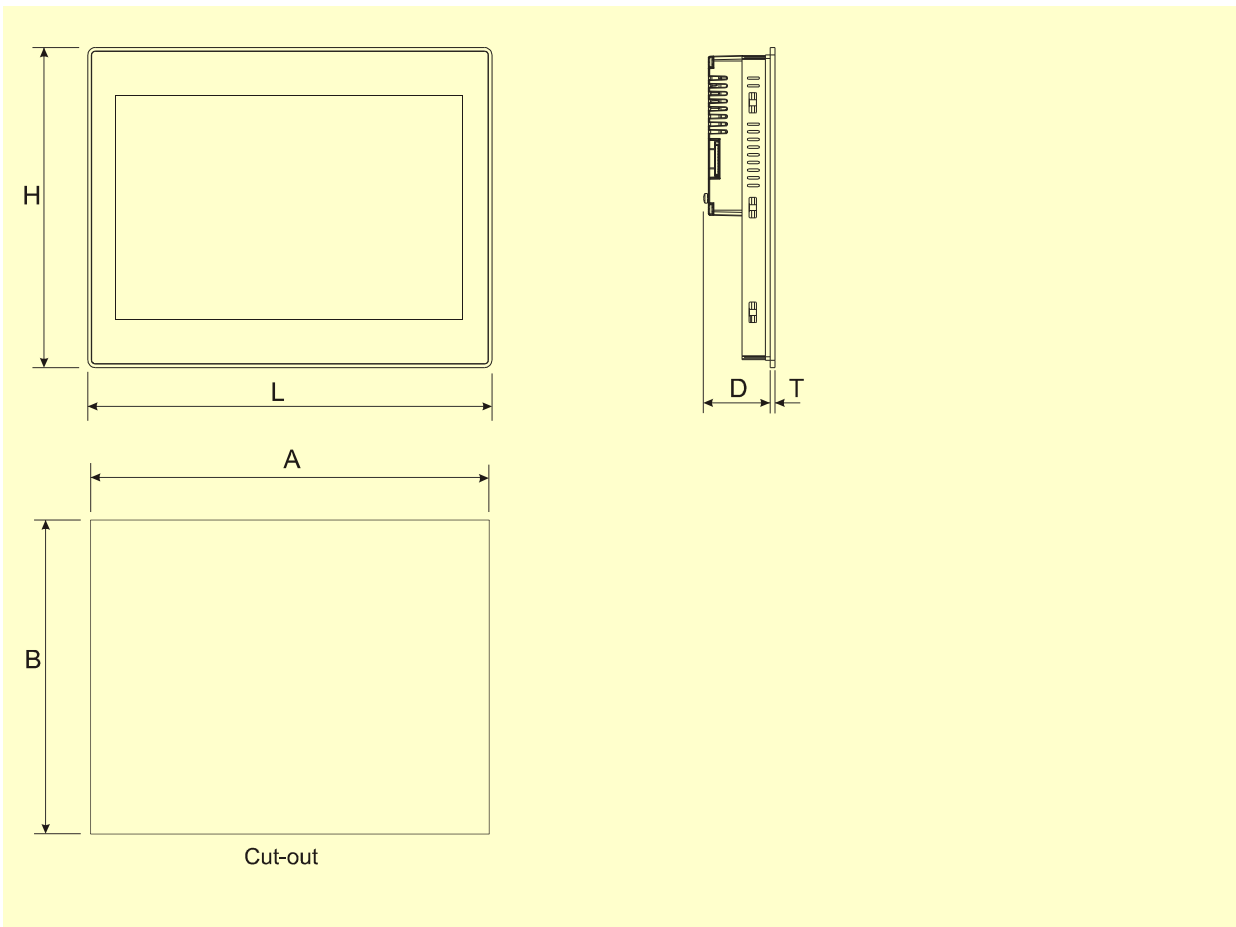
The eTOP Series 500 HMI panels have been designed to run the JMobile software.

- JMobile runtime included. Full compatibility with JMobile Studio.
- Full vector graphic support. Native support of SVG graphic objects. Transparency and alpha blending.
- Full object dynamics: control visibility and transparency, move, resize, rotate any object on screen. Change properties of basic and complex objects.
- TrueType fonts
- Multilanguage applications. Easily create and manage your applications in multiple languages to meet global requirements. Far East languages are supported. Tools available in JMobile Studio support easy third-party translations and help reducing development and maintenance costs of the application
- Data display in numerical, text, bargraph, analog gauges and graphic image formats.
- Rich set of state-of-the-art HMI features: data acquisition, alarm handling, scheduler and timed actions (daily and weekly schedulers, exception dates), recipes, users and passwords, e-mail and RSS feeds, rotating menus
- Includes support for a wide range of communication drivers for Factory and Building Automation systems.
- Multiple drivers communication capability.
- Remote monitoring and control. Client-Server functionality. Mobile clients supported.
- Remote maintenance and support with VNC-based functionality.
- Off-line simulation of the HMI application with JMobile Studio.
- Powerful scripting language for automating HMI applications. Script debugging improves efficiency in application development.
- Rich gallery of symbols and objects
- Project templates
- Optional plug-in modules for fieldbus systems, I/O and controllers.
- Display backlight dimmable 0%

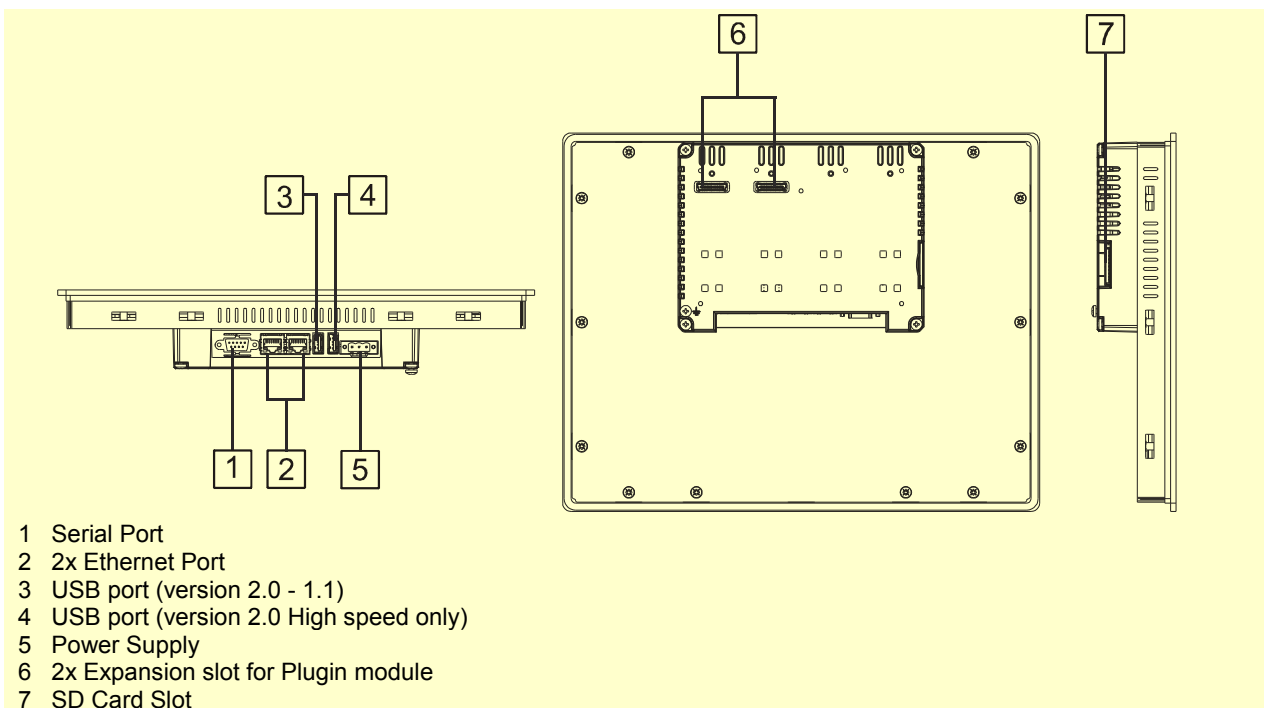
Technical Data

Display		Screen saver	Yes
Type	TFT	Buzzer	Yes, audible feedback for touchscreen
Resolution	1280x800, WXGA		
Active display area	13"3 widescreen diagonal	Ratings	
Colors	64K	Power supply voltage	24 Vdc (10 to 32 Vdc)
Backlight	LED	Current consumption	1.15A at 24Vdc(max.)
Brightness	300 Cd/m ² typ.	Fuse	Automatic
Dimming	Yes	Weight	Approx 2.8 Kg
		Battery	Rechargeable Lithium battery, not user-replaceable
System Resources			
Operating System	Microsoft Windows CE 6.0	Environmental Conditions	
User memory	256 MB Flash	Operating temperature	0 to 50 °C (vertical installation)
RAM	256MB DDR	Storage temperature	-20 to +70 °C
		Operating and storage humidity	5 – 85 % relative humidity, non-condensing
Operator Interface		Protection class	IP66 (front) IP20 (rear)
Touchscreen	Analog resistive		
LED indicators	1 (dual color)	Dimensions	
		Faceplate LxH	336x267 mm (13.22x10.51")
Interface		Cutout AxB	326x256 mm (12.83x10.07")
Ethernet	2 10/100 Mbit with integrated Switch	Depth D+T	56+4 mm (2.20+0.16")
USB	2 Host Interface (1 version 2.0, 1 version 2.0 and 1.1)		
Serial	RS-232, RS-485, RS-422, software configurable	Approvals	
Expansion Slot	2 Optional plug-in	CE	Emission EN 61000-6-4 Immunity EN 61000-6-2 for installation in industrial environments
Memory Card	SD Card Slot	DNV	DNV Type Approval Certificate
		UL	UL508 Listed Haz. Loc. Class I, Division 2, Groups A,B,C and D.
Functionality		C-Tick	C-Tick mark
Vector graphics	Yes, includes SVG support		
Object dynamics	Yes. Visibility, opacity, position, size, rotation for most object types.		
TrueType fonts	Yes		
Multiple driver communication	Yes, max 2 drivers		
Data acquisition and trend presentation	Yes. Flash memory storage limited only by available memory		
Multilanguage	Yes, with runtime language switching.		
Recipes	Yes. Flash memory storage limited only by available memory		
Alarms	Yes		
Historical event list	Yes		
Users and passwords	Yes		
Hardware Real Time Clock	Yes, with battery back-up		

Dimensions



Connections



Ordering Information

Model	Part Number	Description
eTOP513-White	+ETOP513U1P1	13"3 widescreen TFT color touchscreen with Ethernet and USB interfaces. White front panel. JMobile run-time.
eTOP513-Silver	+ETOP513U2P1	13"3 widescreen TFT color touchscreen with Ethernet and USB interfaces. Silver front panel. JMobile run-time.
eTOP513-Black	+ETOP513U3P1	13"3 widescreen TFT color touchscreen with Ethernet and USB interfaces. Black front panel. JMobile run-time.
PROTFOIL-13-GL	R-PROT15	Disposable protection foil for 13"3 widescreen eTOP touch panels (10 pieces).
PROTFOIL-13-UV	R-PROT21	Disposable protection foil for 13"3 widescreen eTOP touch panels (10 pieces). UV resistant.

ptn0355

Ver. 1.6 Copyright © 2011-2014 Exor International S.p.A. – Verona, Italy

Subject to change without notice

The information contained in this document is provided for informational purposes only. While efforts were made to verify the accuracy of the information contained in this documentation, it is provided "as is" without warranty of any kind.

www.uniop.com

UniOP eTOP515

The UniOP eTOP Series 500 HMI products combine state-of-the-art features and top performance with an outstanding design. They are the ideal choice for all demanding HMI applications including factory and building automation.

The eTOP515 features a bright 15" TFT display with a fully dimmable LED backlight.

The JMobile software offers full vector graphic capabilities and plenty of connectivity options.



- 15" XGA TFT color display, LED backlight
- 1024x768 pixel resolution, 64K colors
- Resistive touchscreen
- 2 Ethernet ports with switch function
- 2 USB Host ports
- SD Card Slot
- Connection to fieldbus systems and I/O using optional plug-in modules
- Slim design. Mounting depth less than 50mm

Highlights

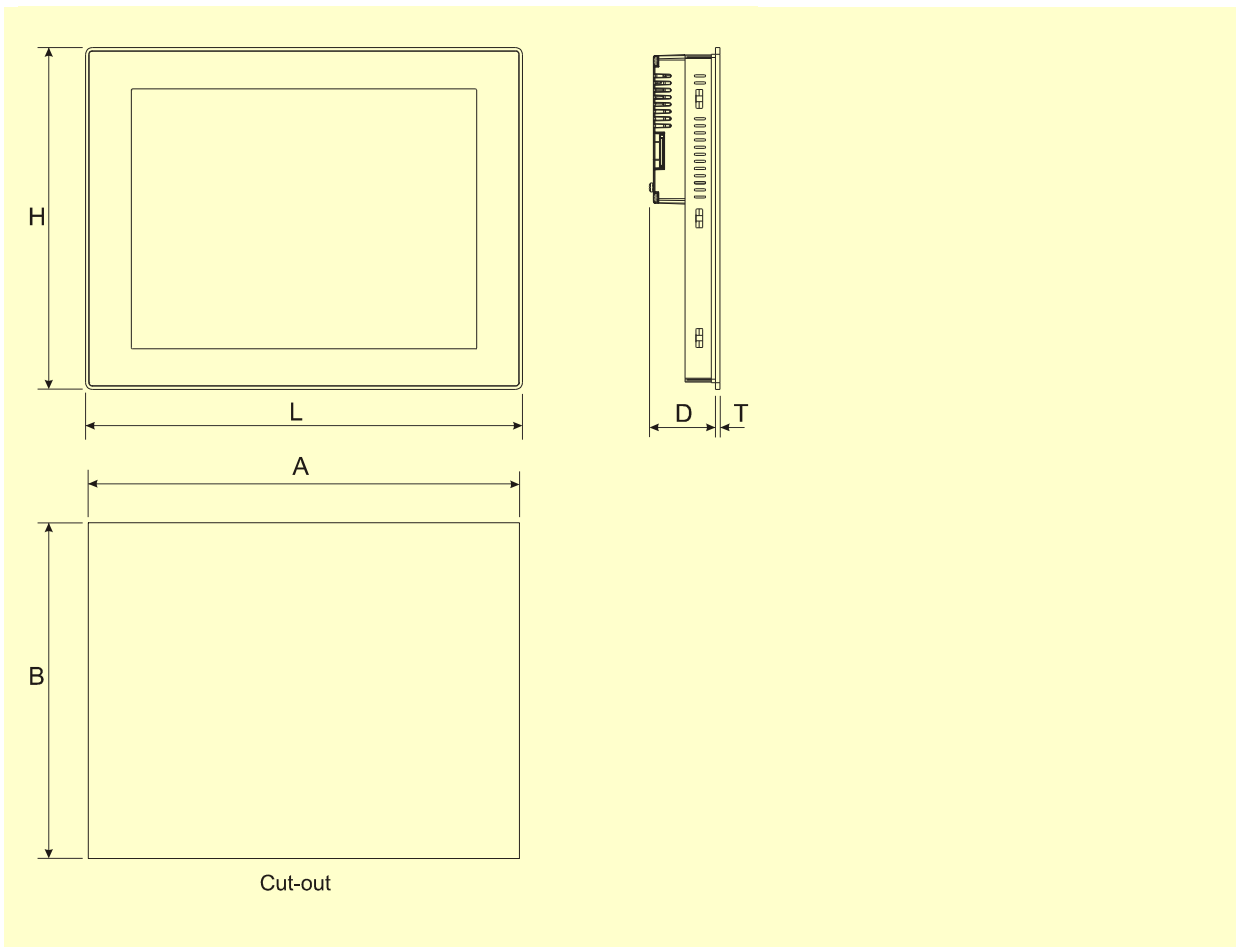
The eTOP Series 500 HMI panels have been designed to run the JMobile software.

- JMobile runtime included. Full compatibility with JMobile Studio.
- Full vector graphic support. Native support of SVG graphic objects. Transparency and alpha blending.
- Full object dynamics: control visibility and transparency, move, resize, rotate any object on screen. Change properties of basic and complex objects.
- TrueType fonts
- Multilanguage applications. Easily create and manage your applications in multiple languages to meet global requirements. Far East languages are supported. Tools available in JMobile Studio support easy third-party translations and help reducing development and maintenance costs of the application
- Data display in numerical, text, bargraph, analog gauges and graphic image formats.
- Rich set of state-of-the-art HMI features: data acquisition, alarm handling, scheduler and timed actions (daily and weekly schedulers, exception dates), recipes, users and passwords, e-mail and RSS feeds, rotating menus
- Includes support for a wide range of communication drivers for Factory and Building Automation systems.
- Multiple drivers communication capability.
- Remote monitoring and control. Client-Server functionality. Mobile clients supported.
- Remote maintenance and support with VNC-based functionality.
- Off-line simulation of the HMI application with JMobile Studio.
- Powerful scripting language for automating HMI applications. Script debugging improves efficiency in application development.
- Rich gallery of symbols and objects
- Project templates
- Optional plug-in modules for fieldbus systems, I/O and controllers.
- Display backlight dimmable to 0%

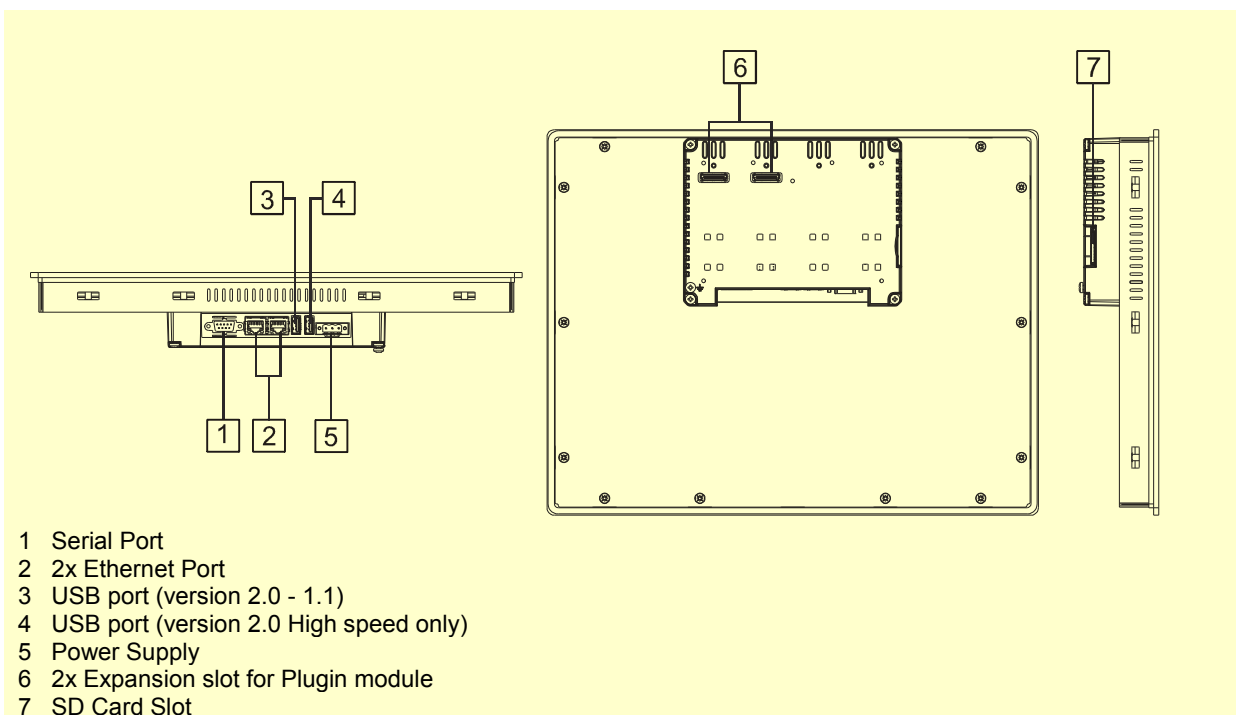
Technical Data

Display		Screen saver	Yes
Type	TFT	Buzzer	Yes, audible feedback for touchscreen
Resolution	1024x768, XGA		
Active display area	15"	Ratings	
Colors	64K	Power supply voltage	24 Vdc (10 to 32 Vdc)
Backlight	LED	Current consumption	1.25A at 24Vdc(max.)
Brightness	300 Cd/m ² typ.	Fuse	Automatic
Dimming	Yes	Weight	Approx 3.5 Kg
		Battery	Rechargeable Lithium battery, not user-replaceable
System Resources		Environmental Conditions	
Operating System	Microsoft Windows CE 6.0	Operating temperature	0 to 50 °C (vertical installation)
User memory	256 MB Flash	Storage temperature	-20 to +70 °C
RAM	256MB DDR	Operating and storage humidity	5 – 85 % relative humidity, non-condensing
		Protection class	IP66 (front) IP20 (rear)
Operator Interface		Dimensions	
Touchscreen	Analog resistive	Faceplate LxH	392x307 mm (15.43x12.08")
LED indicators	1 (dual color)	Cutout AxB	381x296 mm (15x11.65")
		Depth D+T	60+4 mm (2.36+0.16")
Interface		Approvals	
Ethernet	2 10/100 Mbit with integrated Switch	CE	Emission EN 61000-6-4 Immunity EN 61000-6-2 for installation in industrial environments
USB	2 Host Interface (1 version 2.0, 1 version 2.0 and 1.1)	DNV	DNV Type Approval Certificate
Serial	RS-232, RS-485, RS-422, software configurable	UL	UL508 Listed Haz. Loc. Class I, Division 2, Groups A,B,C and D.
Expansion Slot	2 Optional plug-in	C-Tick	C-Tick mark
Memory Card	SD Card Slot		
Functionality			
Vector graphics	Yes, includes SVG support		
Object dynamics	Yes. Visibility, opacity, position, size, rotation for most object types.		
TrueType fonts	Yes		
Multiple driver communication	Yes, max 2 drivers		
Data acquisition and trend presentation	Yes. Flash memory storage limited only by available memory		
Multilanguage	Yes, with runtime language switching.		
Recipes	Yes. Flash memory storage limited only by available memory		
Alarms	Yes		
Historical event list	Yes		
Users and passwords	Yes		
Hardware Real Time Clock	Yes, with battery back-up		

Dimensions



Connections



Ordering Information

Model	Part Number	Description
eTOP515-White	+ETOP515U1P1	15" TFT color touchscreen with Ethernet and USB interfaces. White front panel. JMobile run-time.
eTOP515-Silver	+ETOP515U2P1	15" TFT color touchscreen with Ethernet and USB interfaces. Silver front panel. JMobile run-time.
eTOP515-Black	+ETOP515U3P1	15" TFT color touchscreen with Ethernet and USB interfaces. Black front panel. JMobile run-time.
PROTFOIL-15-GL	R-PROT16	Disposable protection foil for 15" widescreen eTOP touch panels (10 pieces).
PROTFOIL-15-UV	R-PROT22	Disposable protection foil for 15" widescreen eTOP touch panels (10 pieces). UV resistant.

ptn0356

Ver. 1.6

Copyright © 2011-2014 Exor International S.p.A. – Verona, Italy

Subject to change without notice

The information contained in this document is provided for informational purposes only. While efforts were made to verify the accuracy of the information contained in this documentation, it is provided "as is" without warranty of any kind.

www.uniop.com